



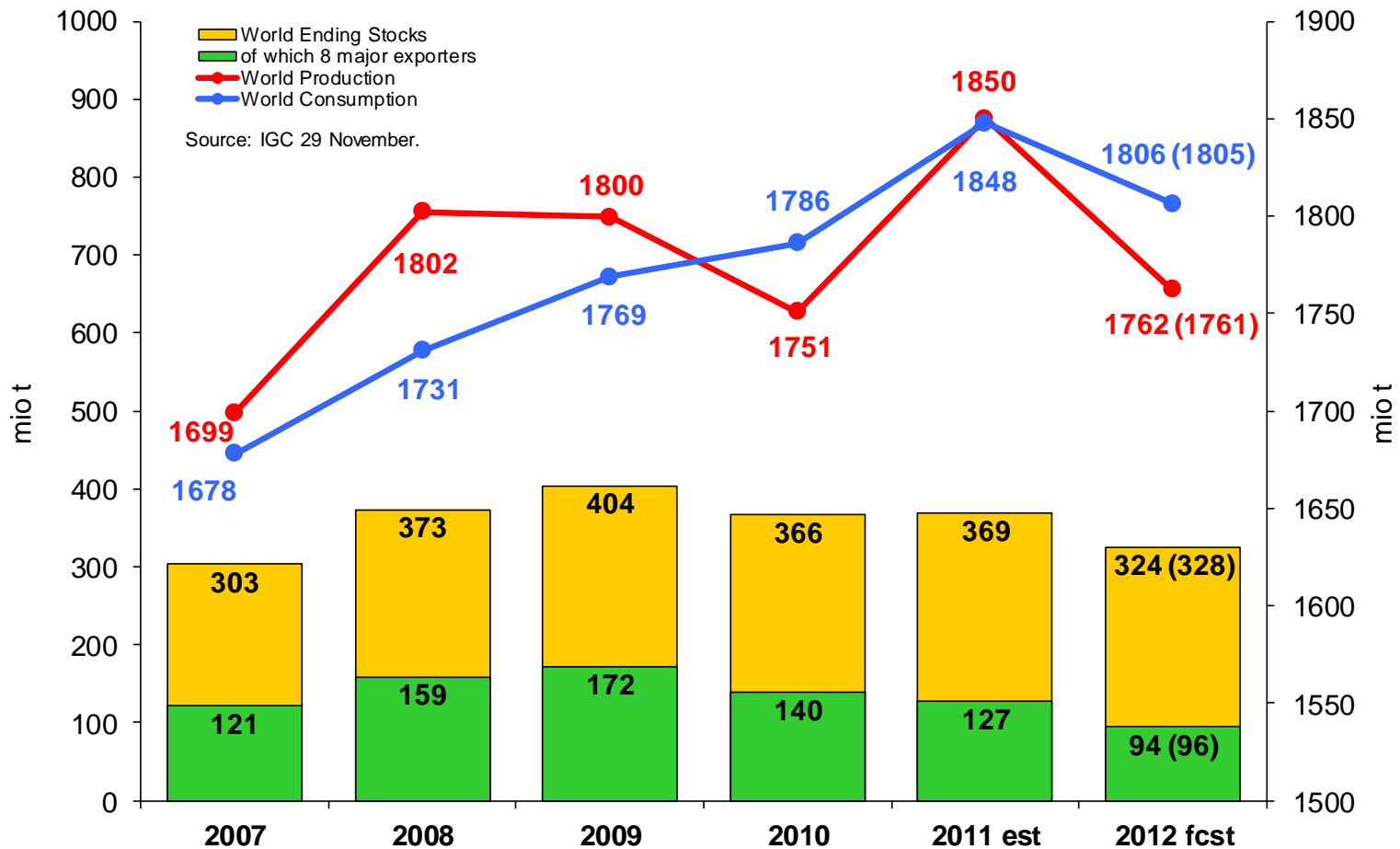
Market situation Cereals

AGRI C 5

**Advisory group on cereals, oilseeds and protein
crops**

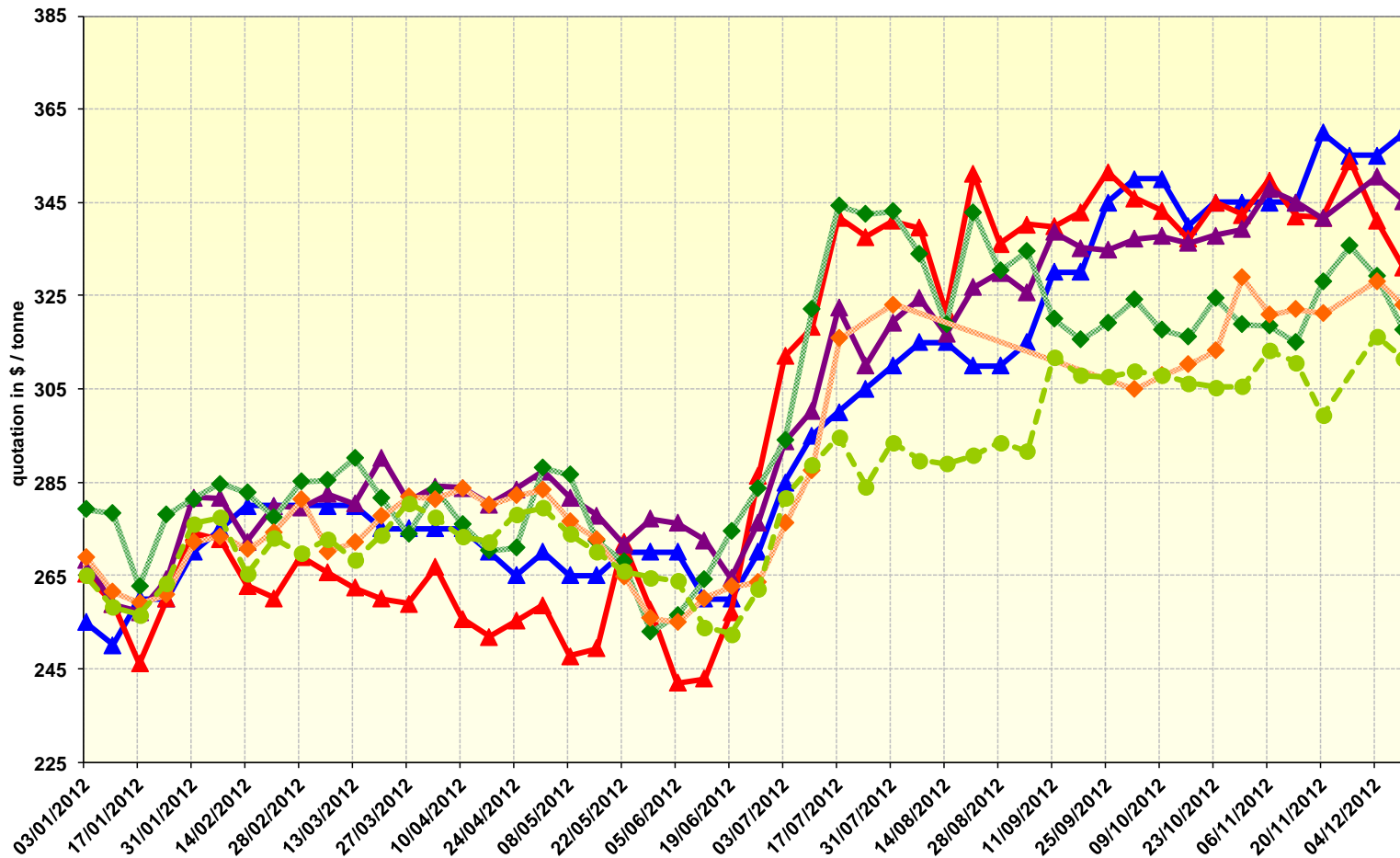
14 December 2012

World cereals: IGC

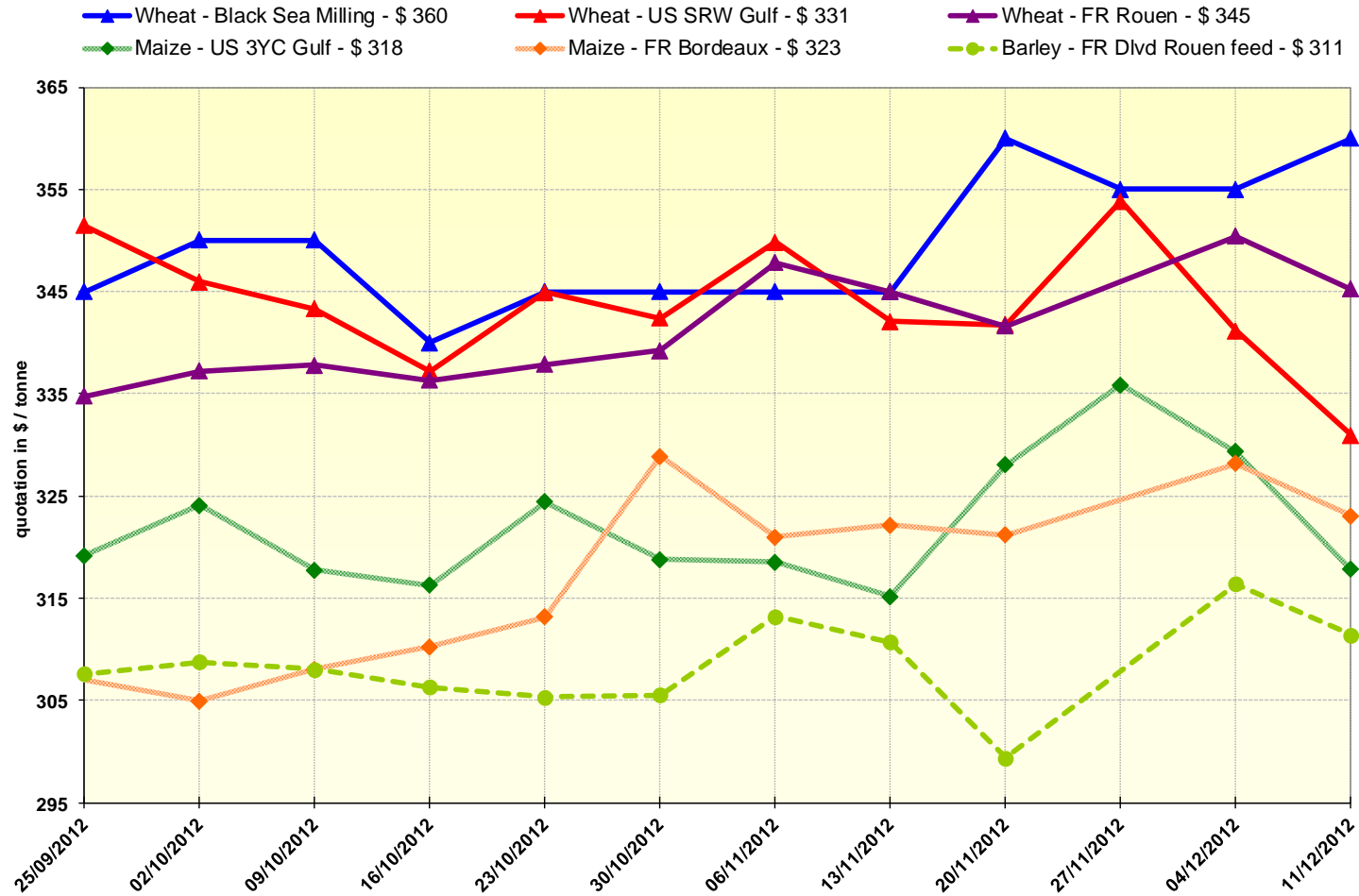


World cereal prices (\$/t)

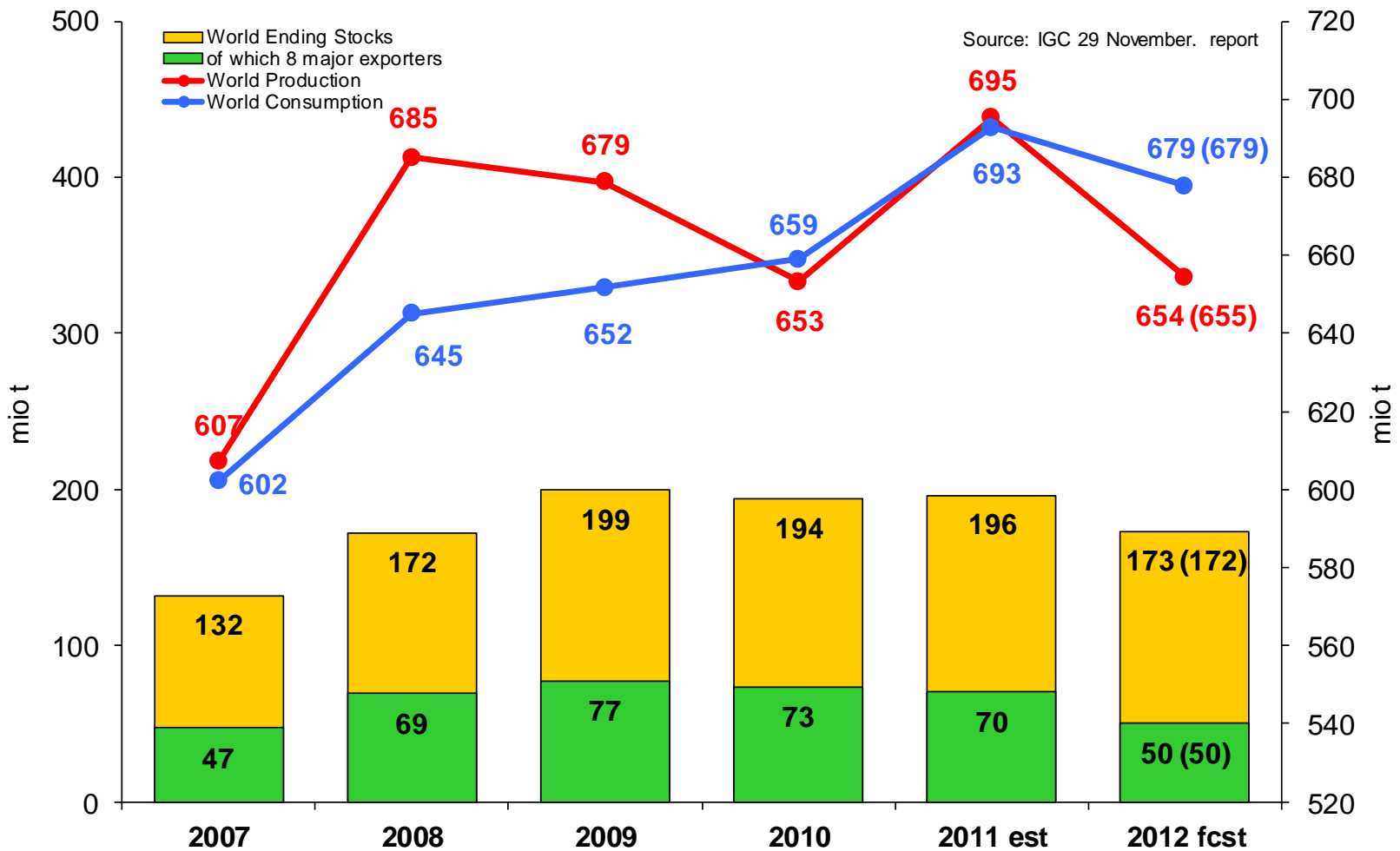
- ▲ Wheat - Black Sea Milling - \$ 360
 ▲ Wheat - US SRW Gulf - \$ 331
 ▲ Wheat - FR Rouen - \$ 345
- ◆ Maize - US 3YC Gulf - \$ 318
 ◆ Maize - FR Bordeaux - \$ 323
 ◆ Barley - FR Divd Rouen feed - \$ 311



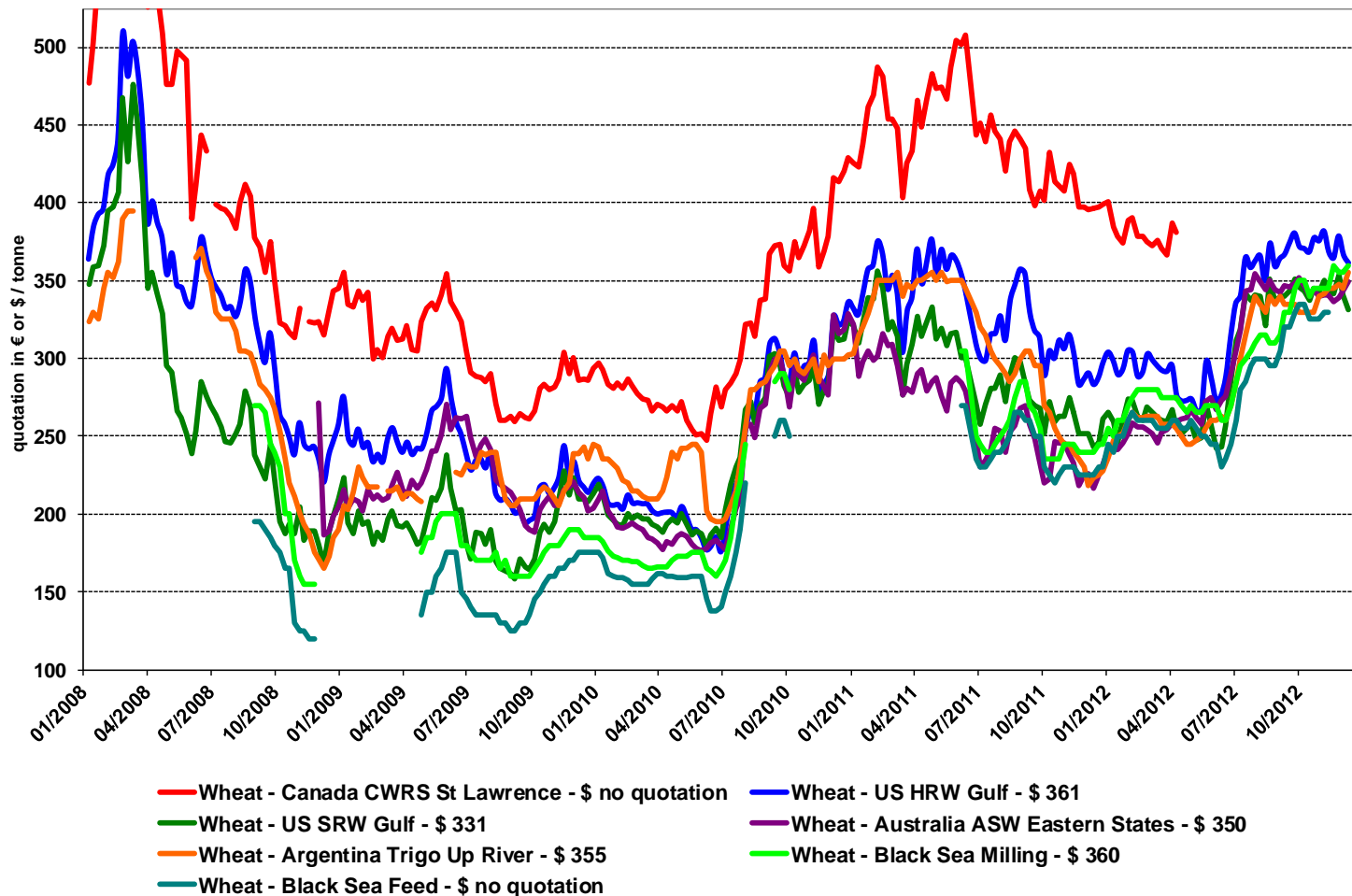
World cereal prices (\$/t)



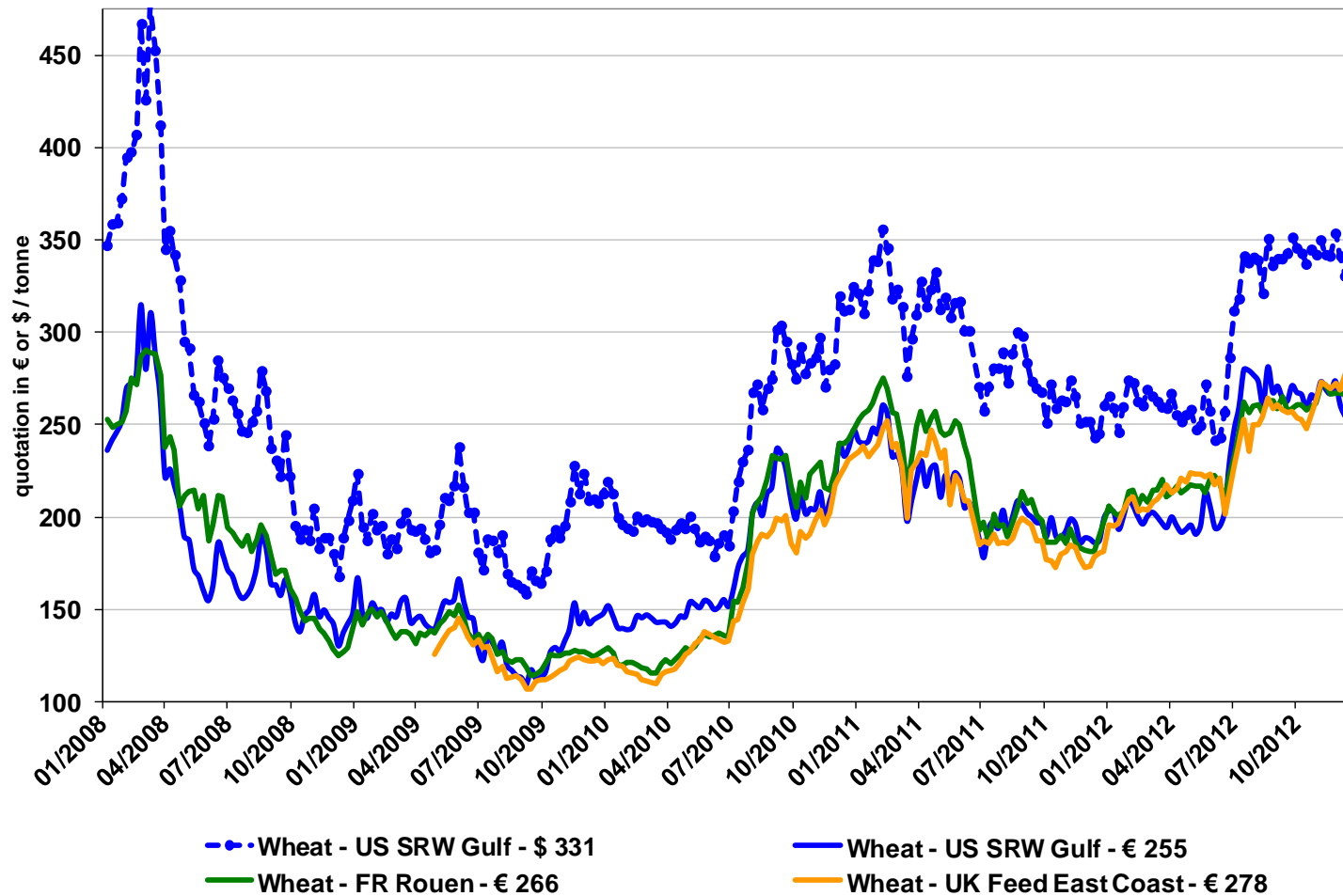
World wheat: IGC



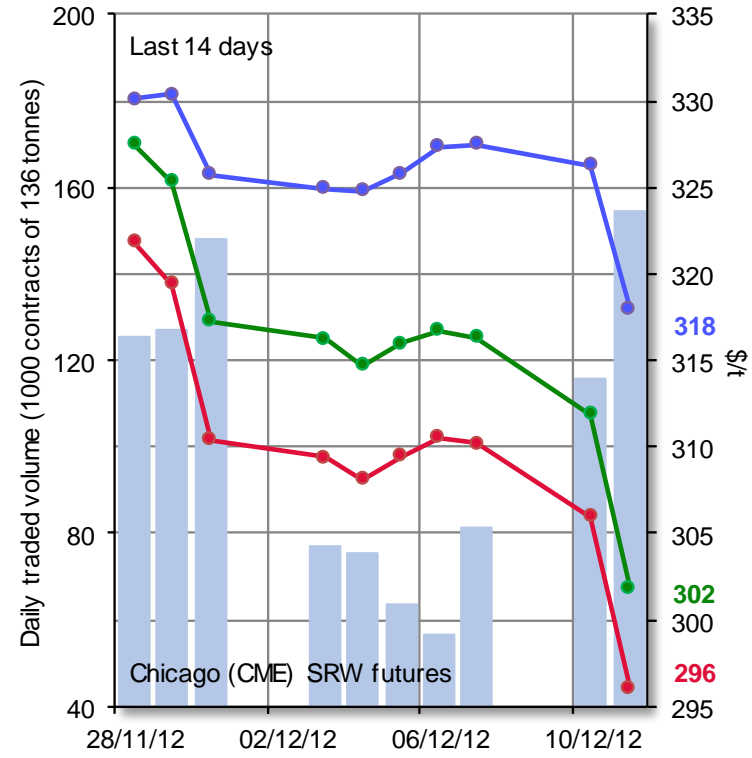
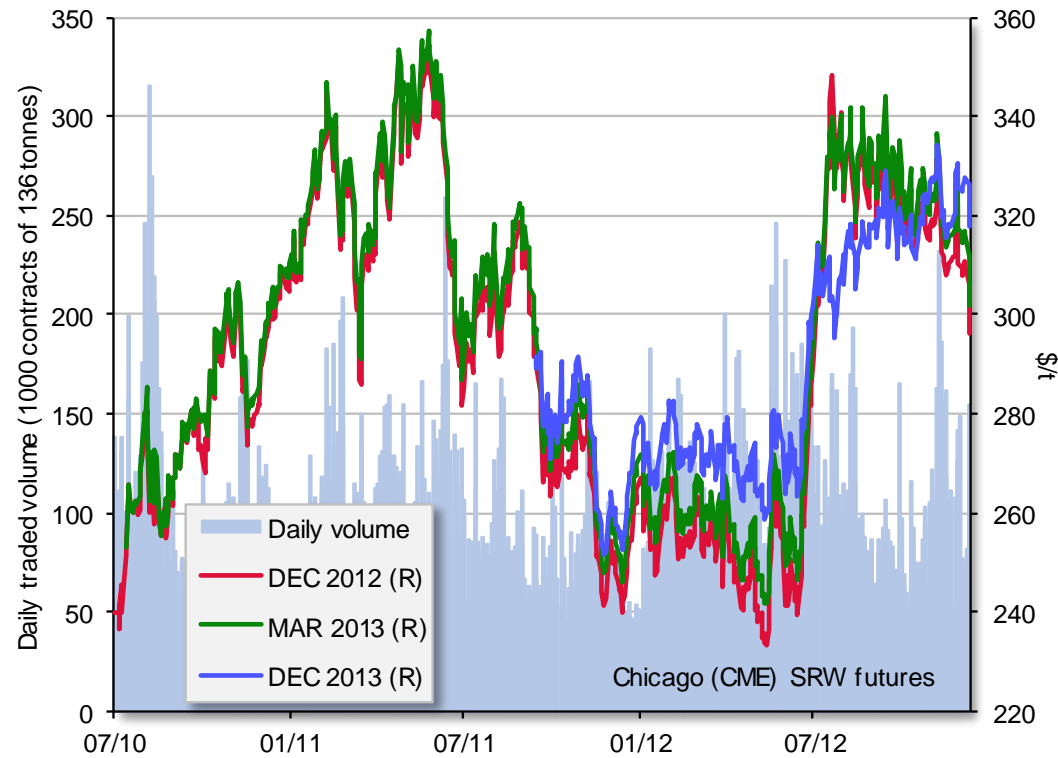
World wheat export prices (fob, US\$ per tonne)



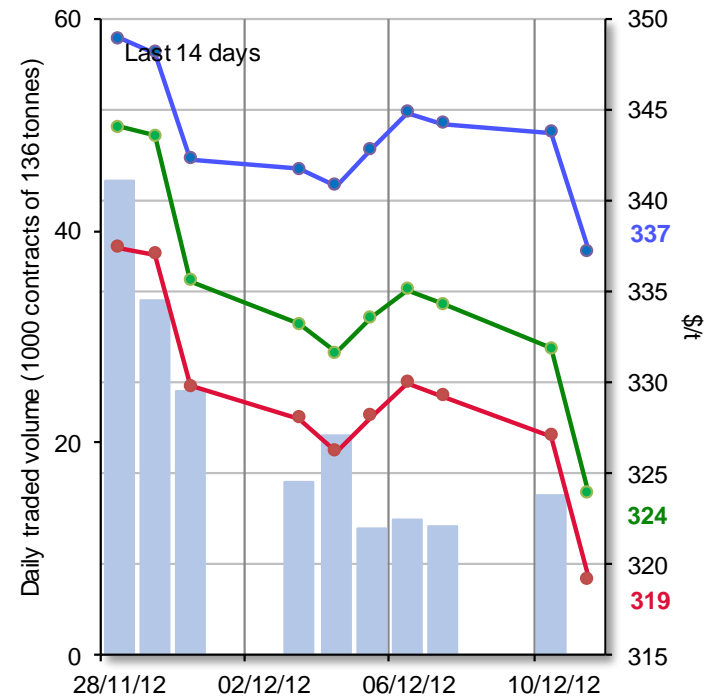
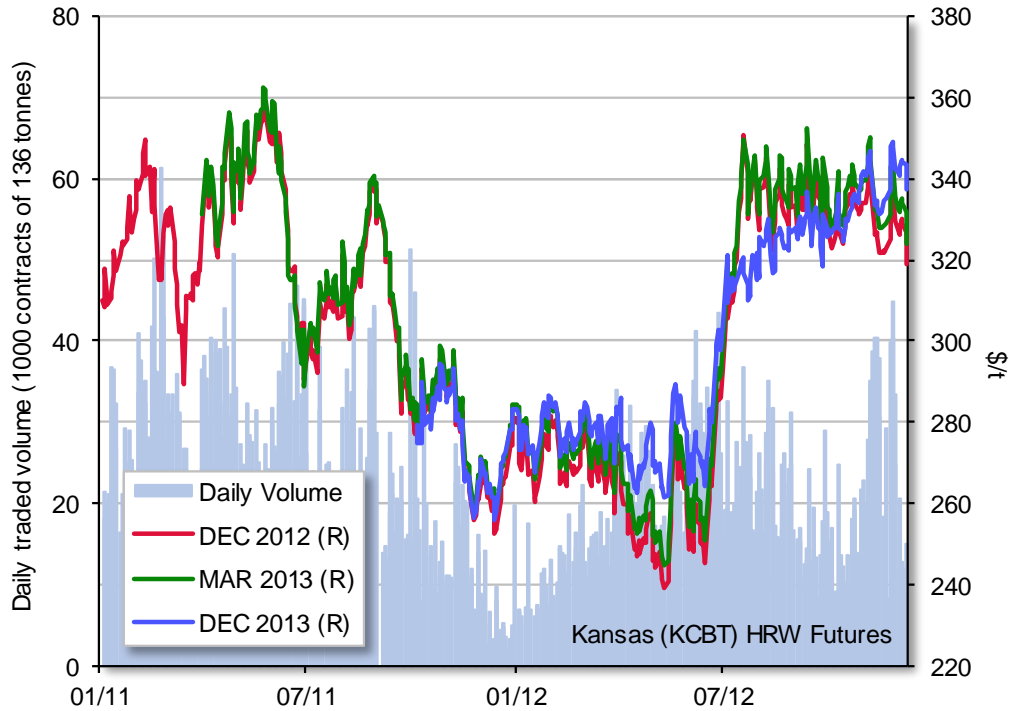
US vs. EU wheat export prices



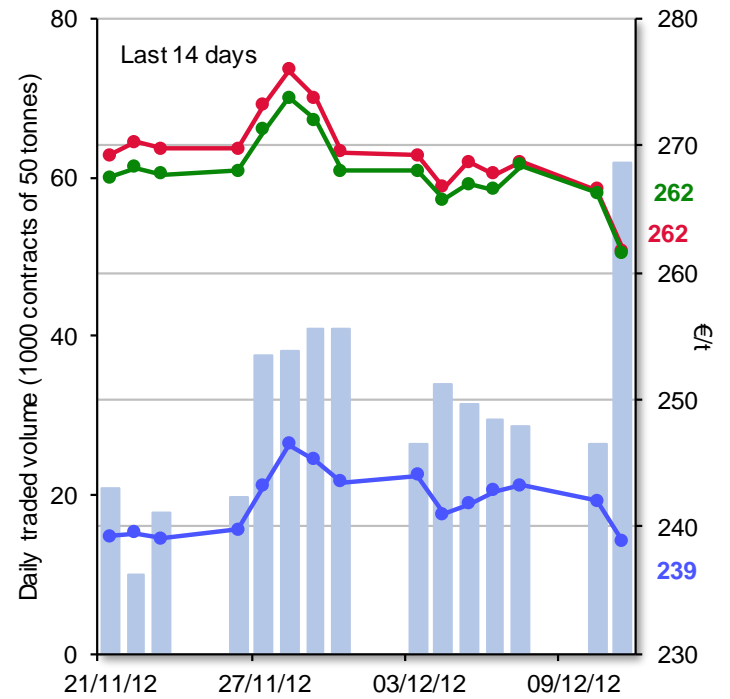
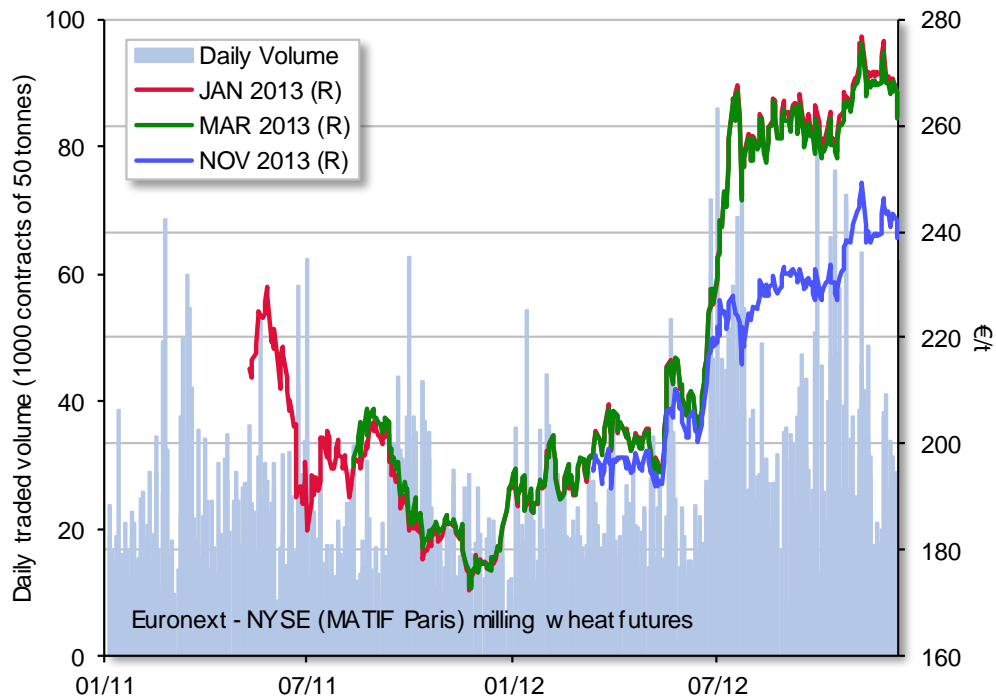
US CME SRW wheat futures



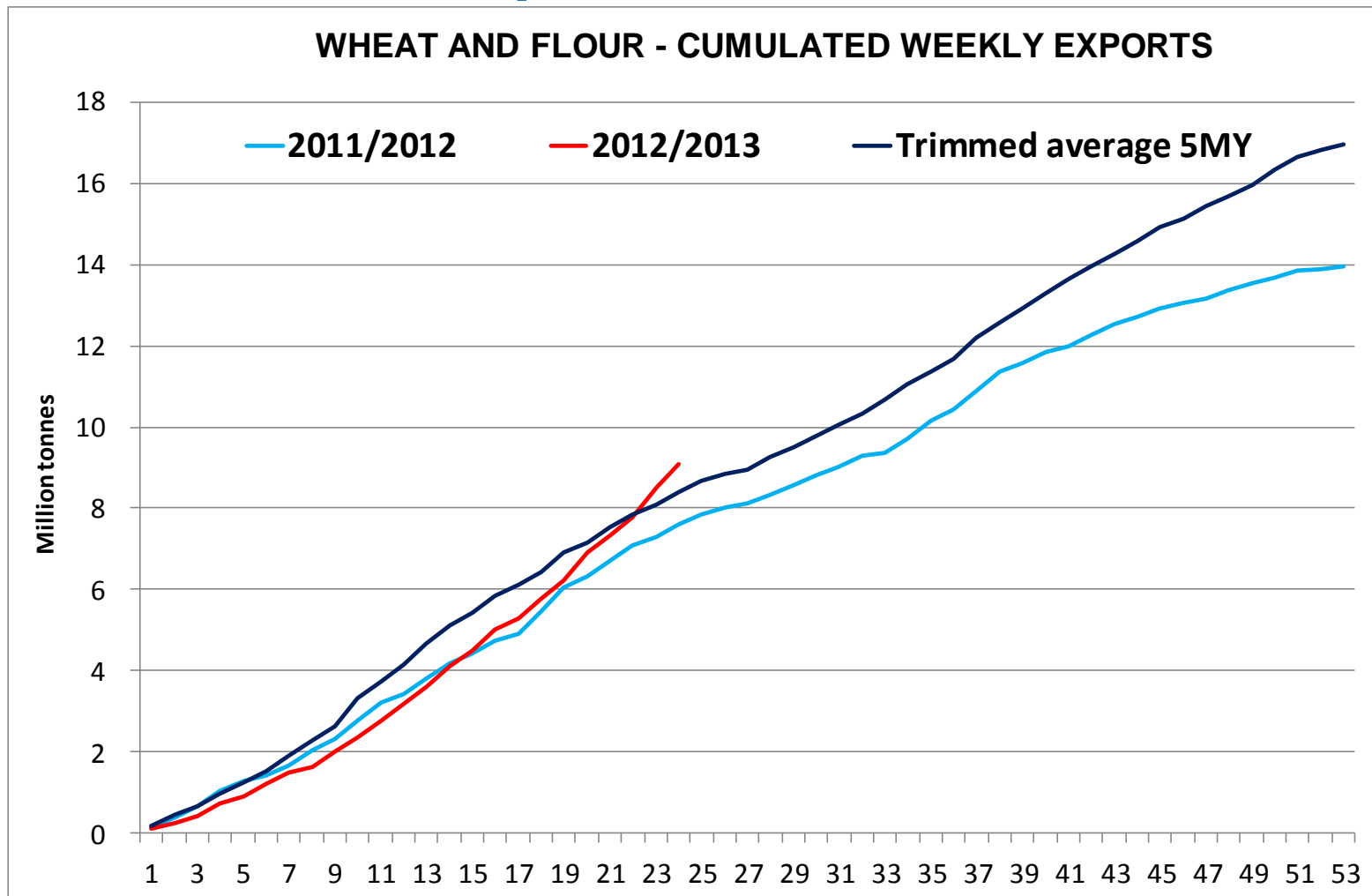
US KCBT HRW wheat futures



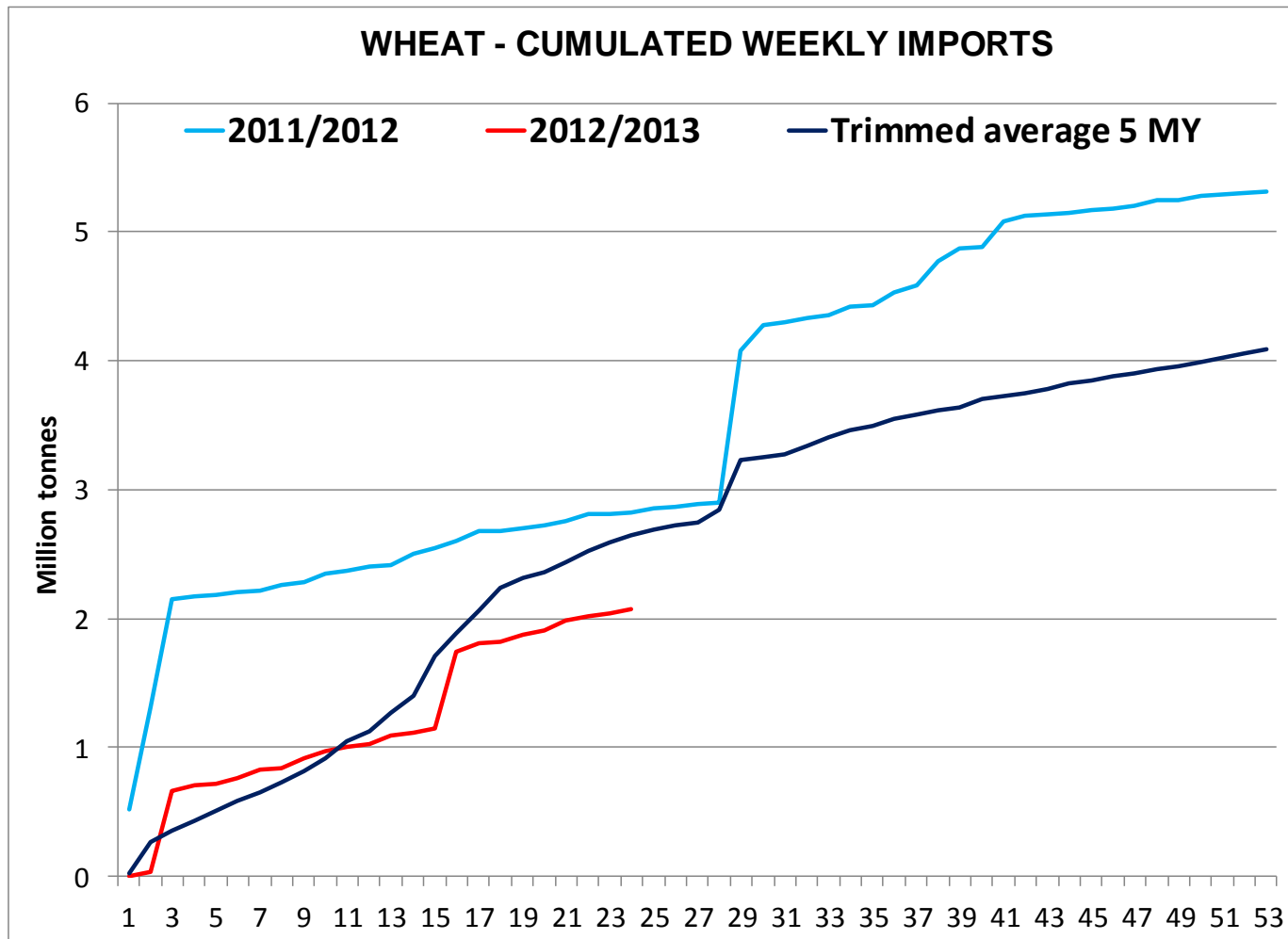
EU Milling Wheat Futures



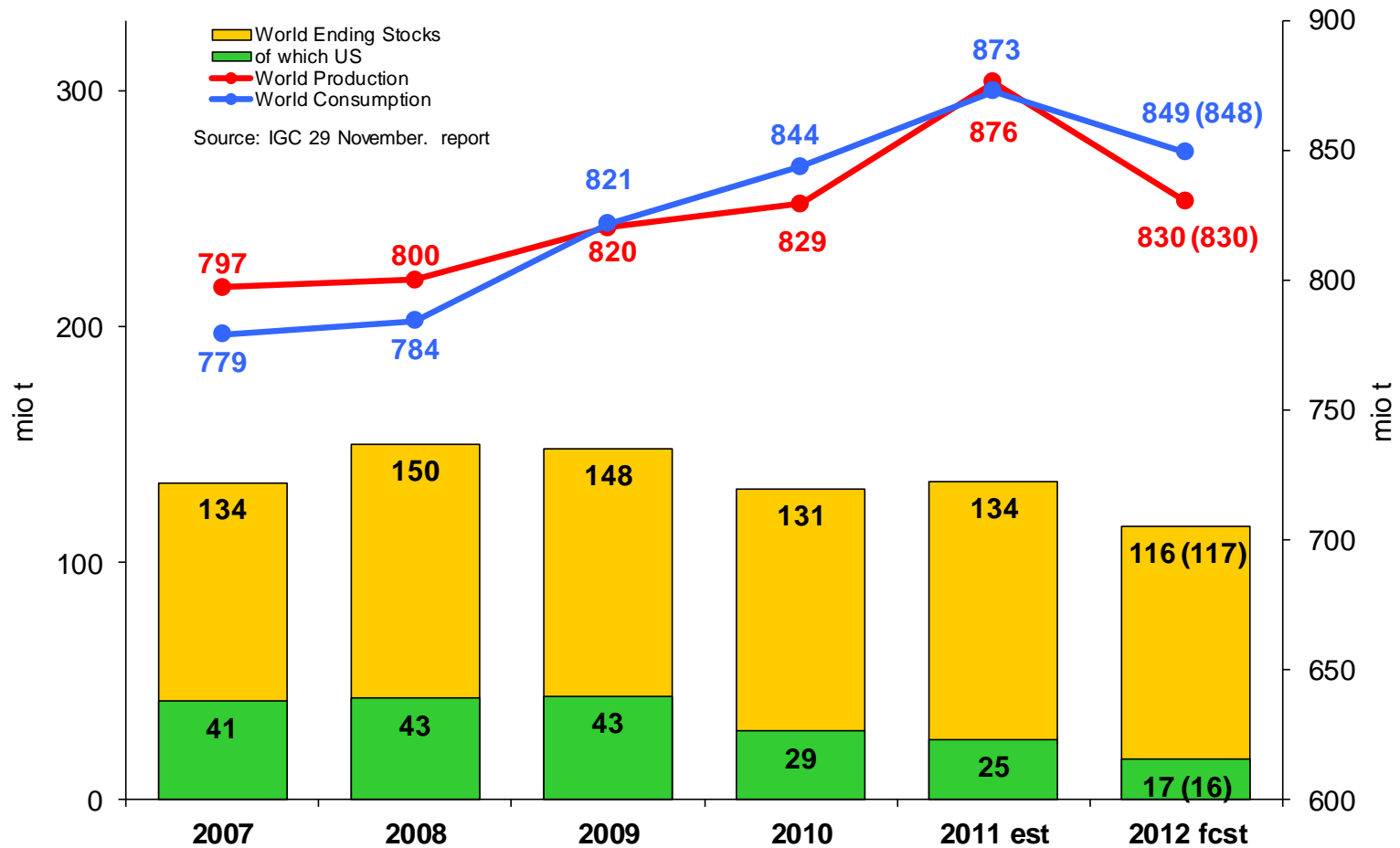
EU wheat export commitments 2012/13



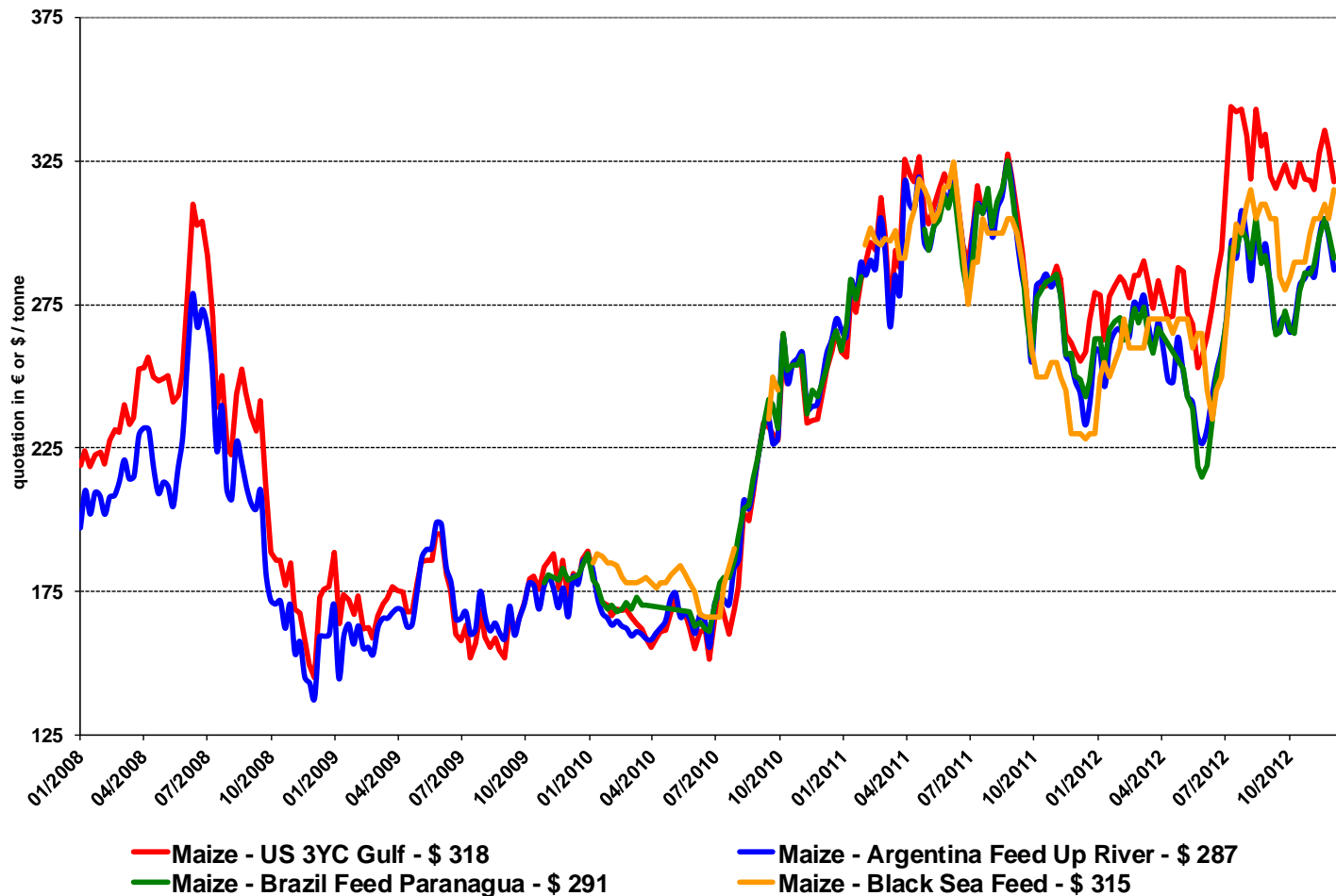
EU wheat import commitments 2012/13



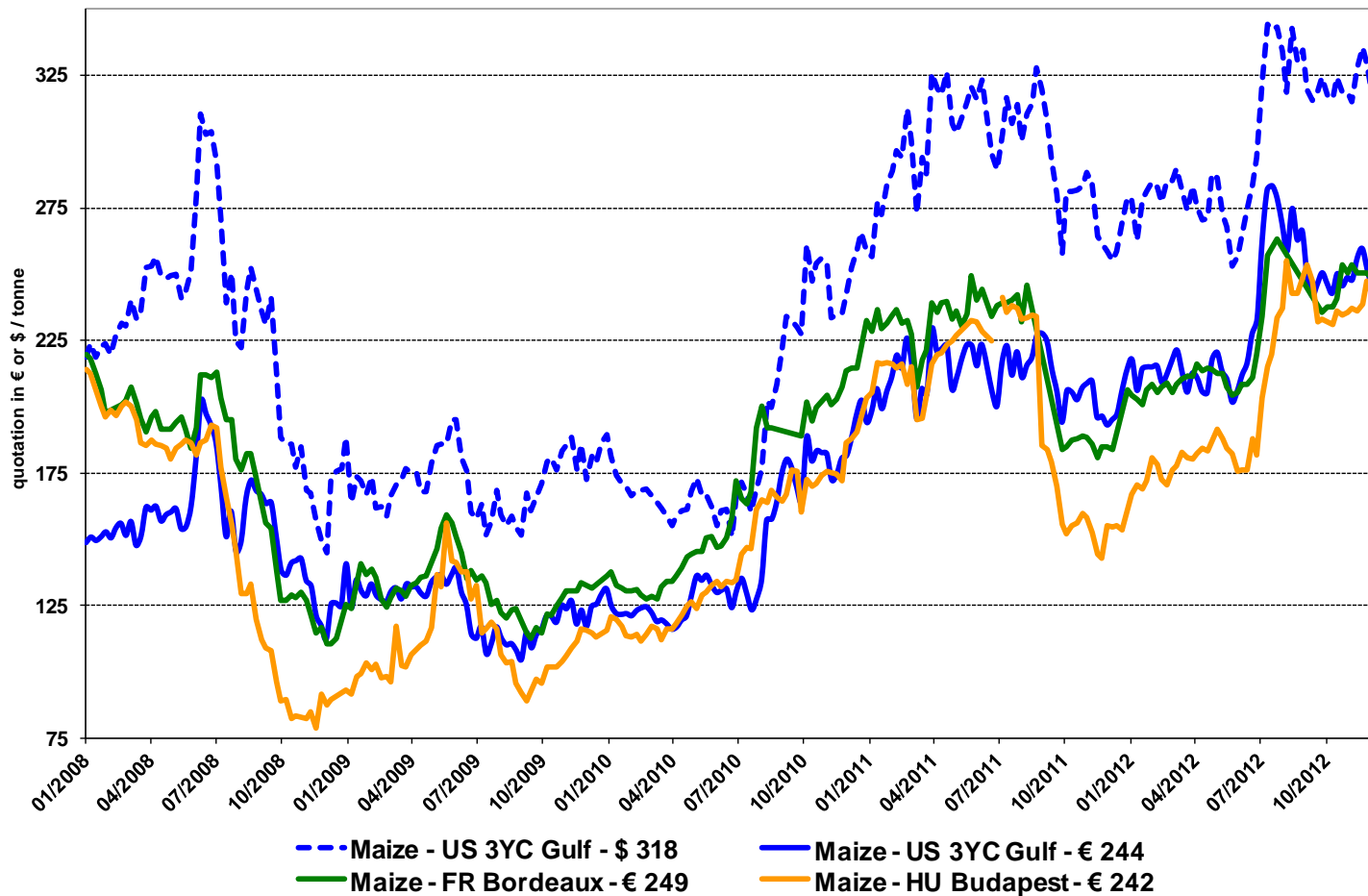
World maize: IGC



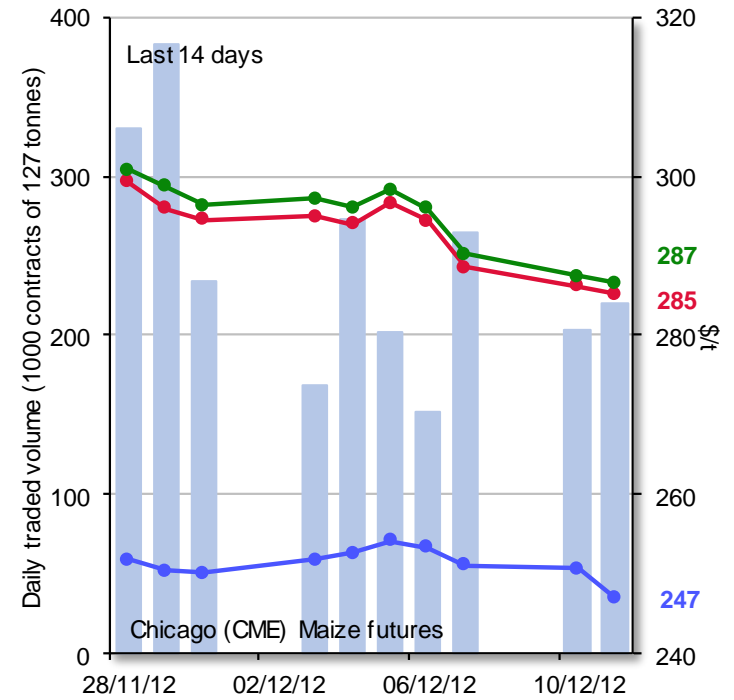
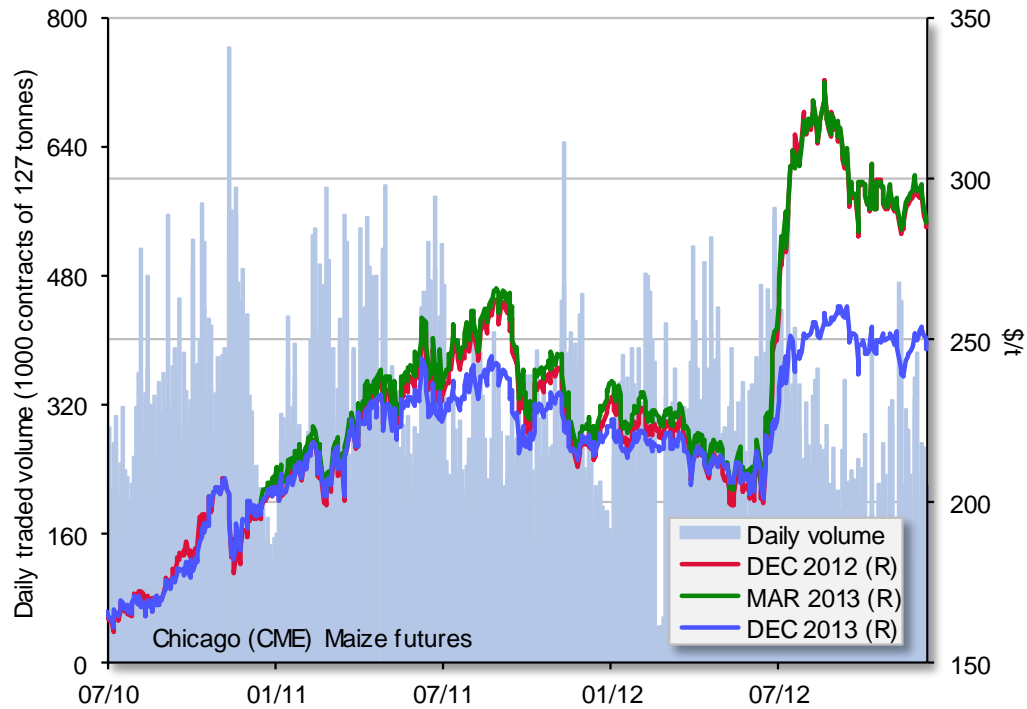
World maize export prices (fob, US\$ per tonne)



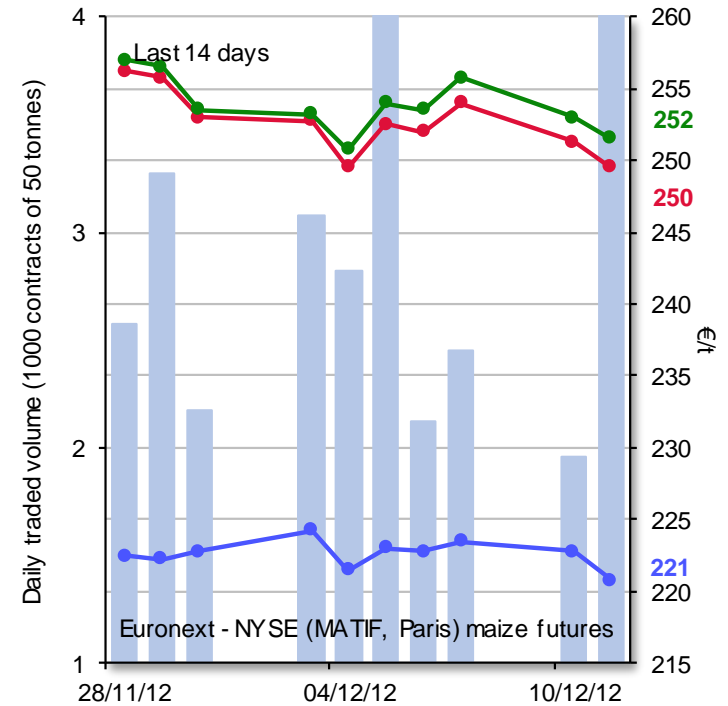
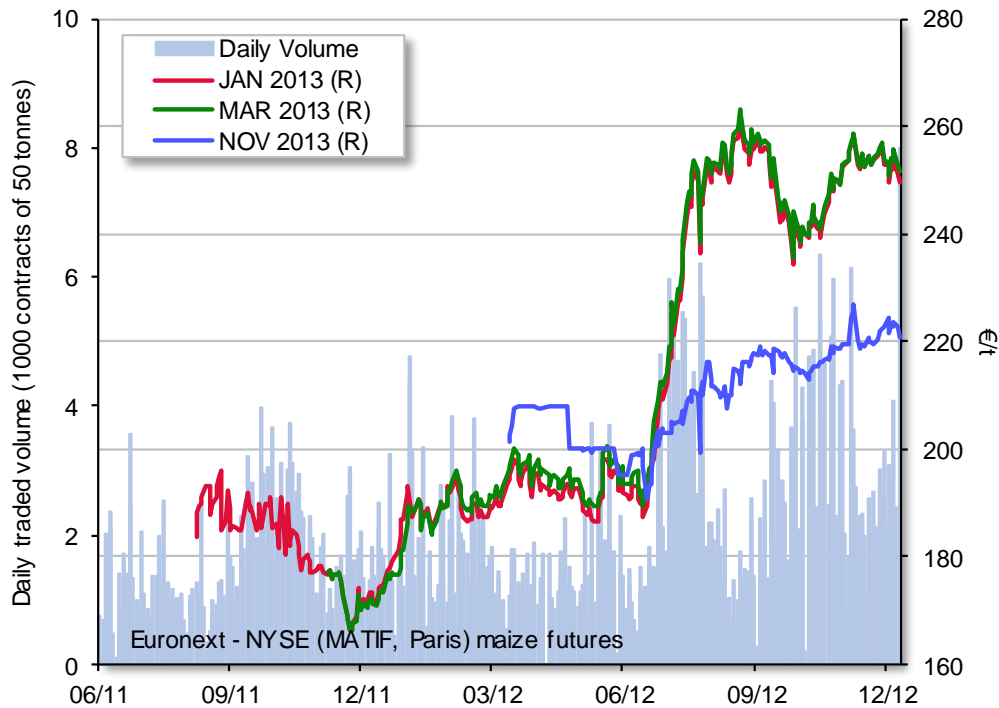
US vs. EU maize prices



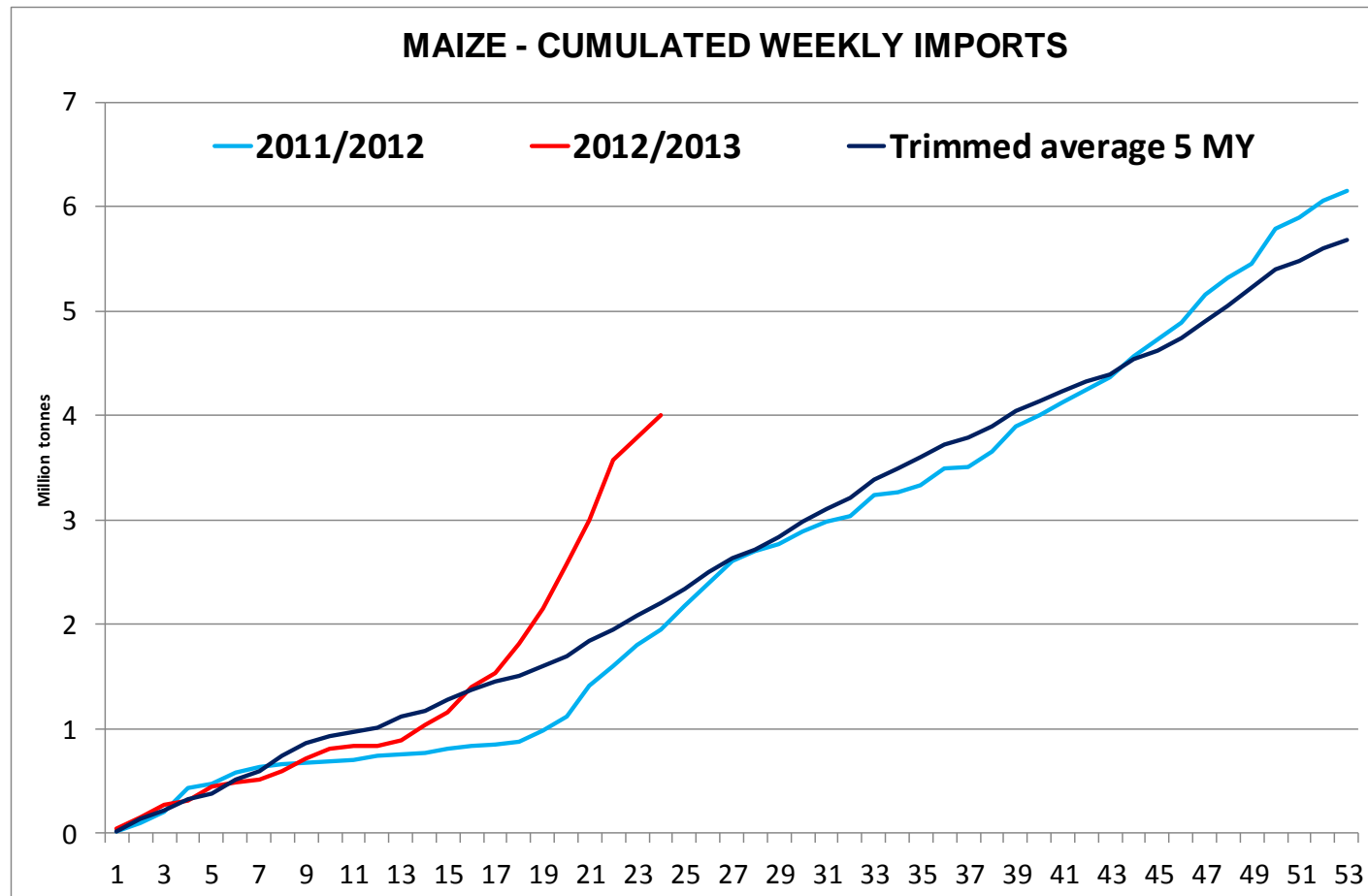
CME maize futures



EU maize futures



EU Maize import commitments 2012/13



EU Commitments 2012/2013 (24 weeks)

- **Imports:** 7.1 mio t (5.8 mio t last MY; 5.4 mio t 2 MY ago)
 - *2.0 mio t soft wheat*
 - *869 000 t durum wheat*
 - *4.0 mio t maize*
 - *11 000 t barley*
- **Exports:** 12.7 mio t (11.9 mio t last MY; 15.1 mio t 2 MY years)
 - *8.1 mio t soft wheat*
 - *2.2 mio t barley*
 - *938 000 t durum wheat*
 - *1.9 mio t maize*
- So far, the EU is a net cereal exporter of 5.6 mio t, against 6.1 mio t last year and 9.7 mio t in 2010/2011.

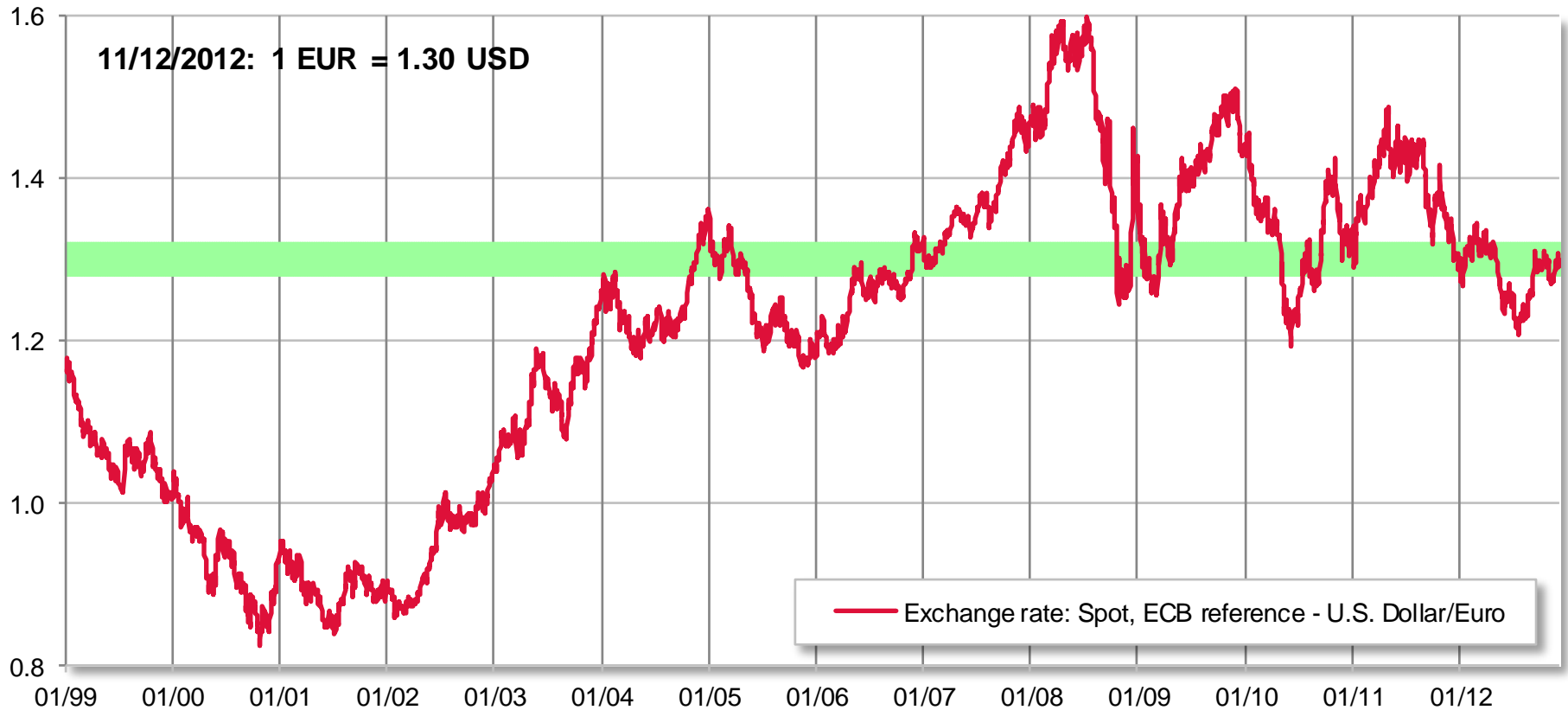


Thank you for your attention!

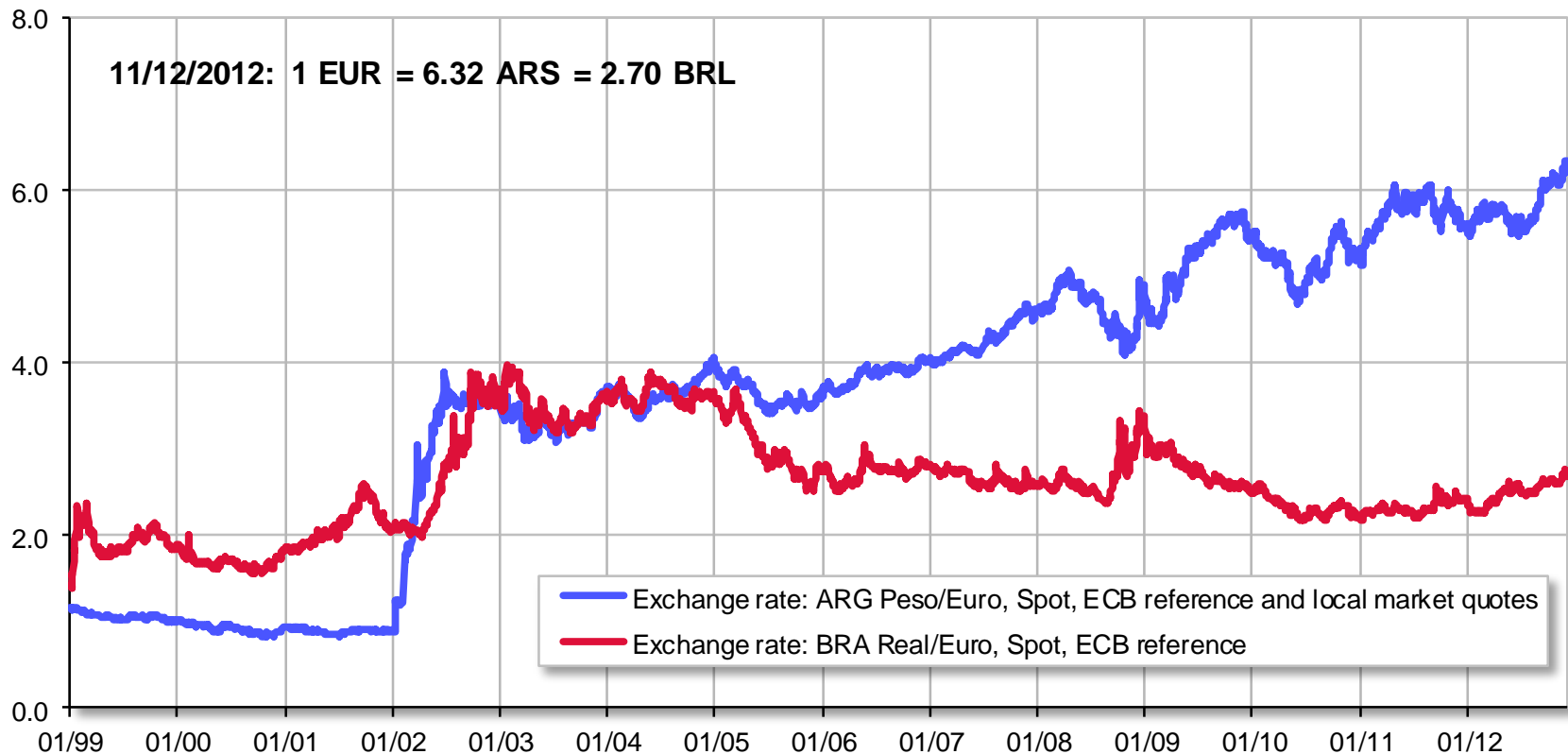
**Balance sheet updates & market presentation
available:**

http://ec.europa.eu/agriculture/cereals/balance-sheets/index_en.htm

Euro – Dollar exchange rate



Euro – Argentine Peso and Brazilian Real exchange rate



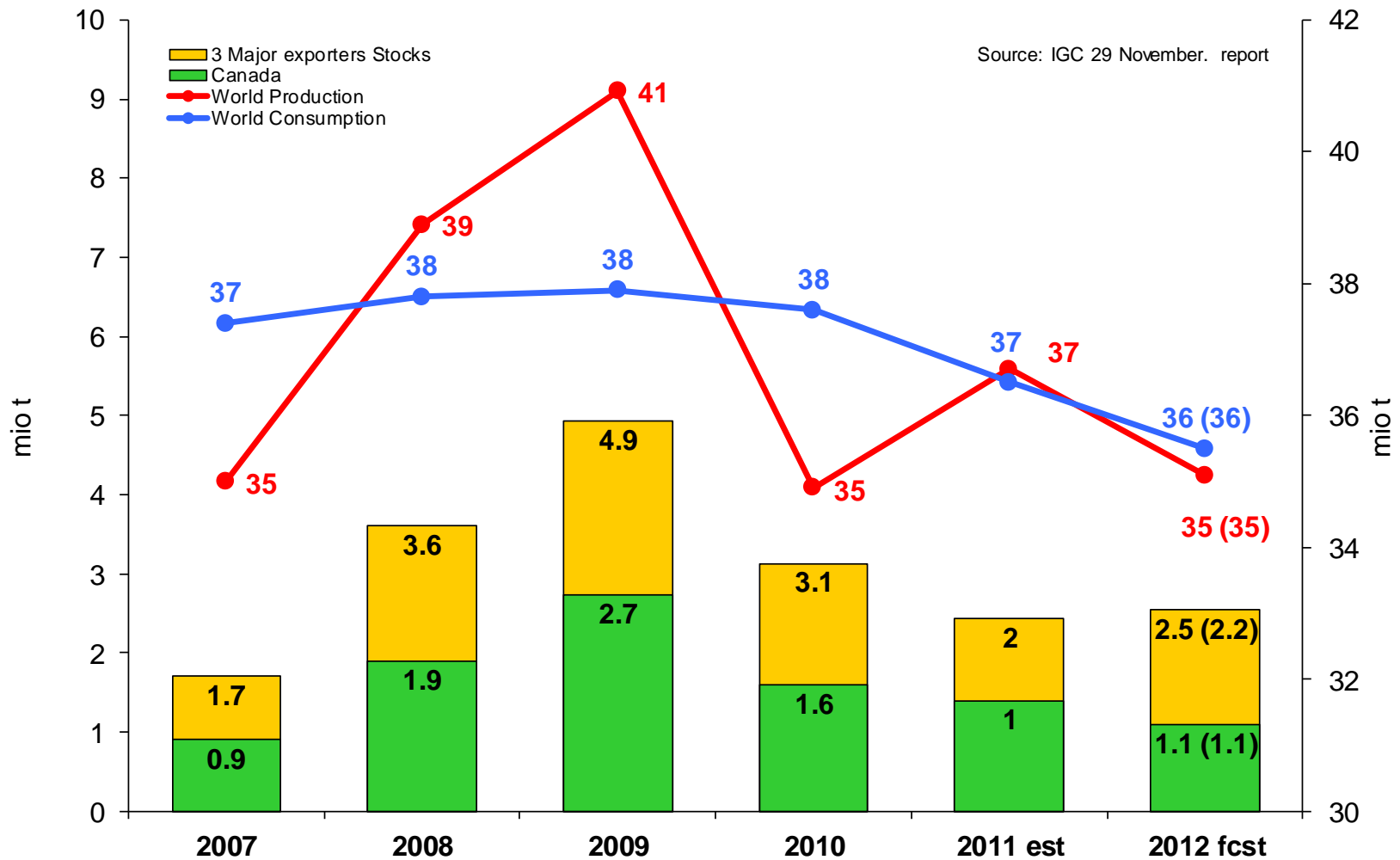
Crude oil price



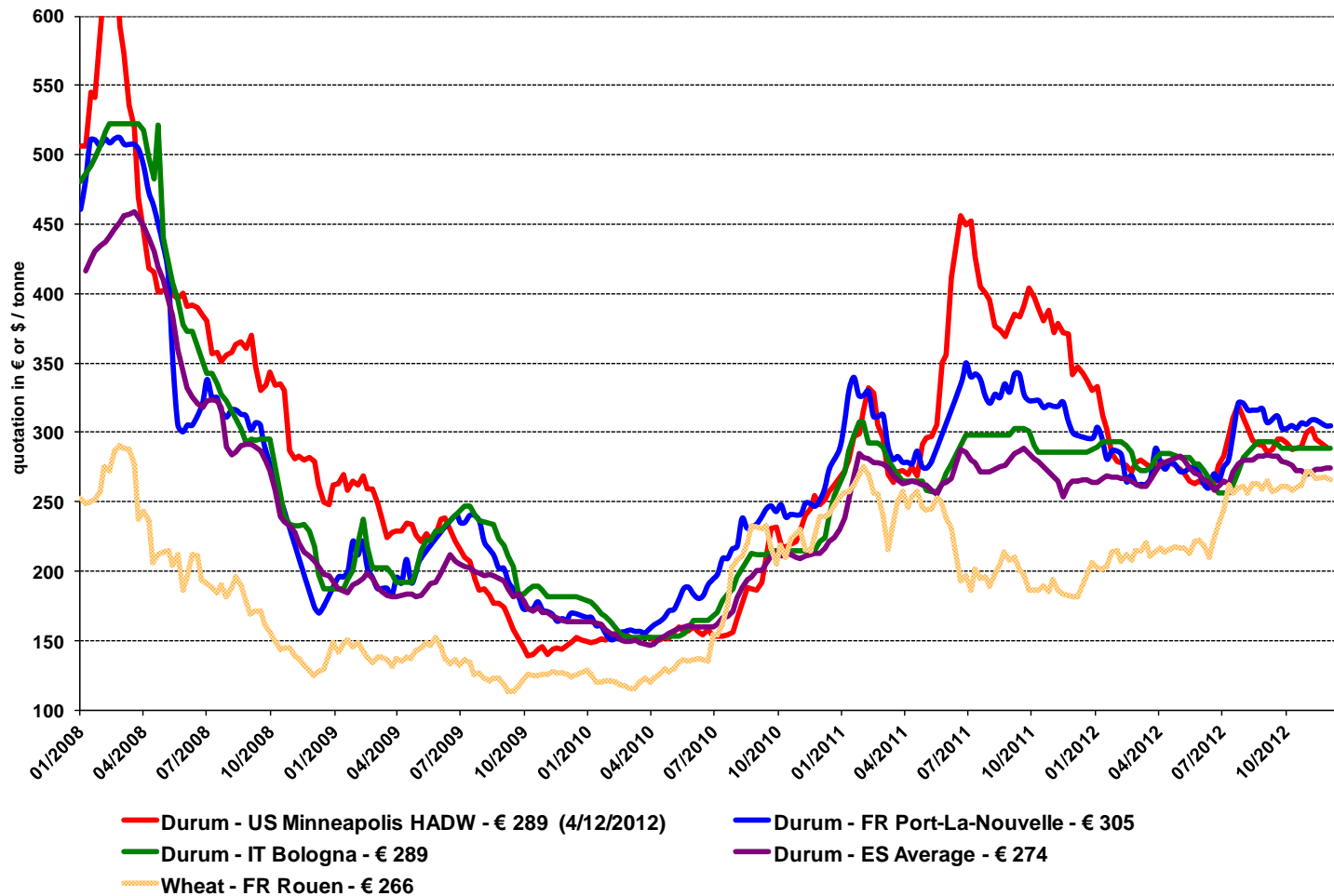
Baltic Dry Index



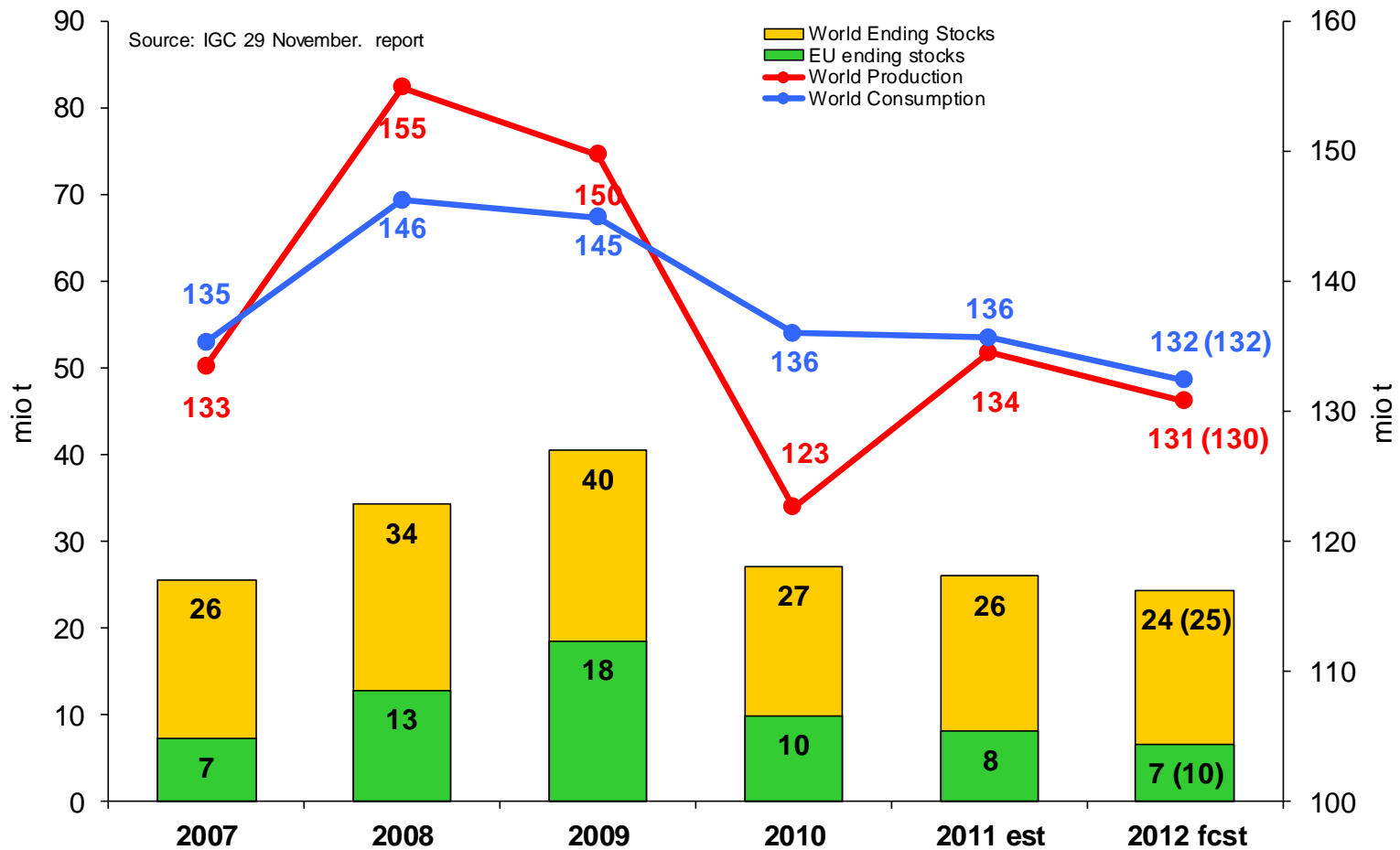
World durum wheat: IGC



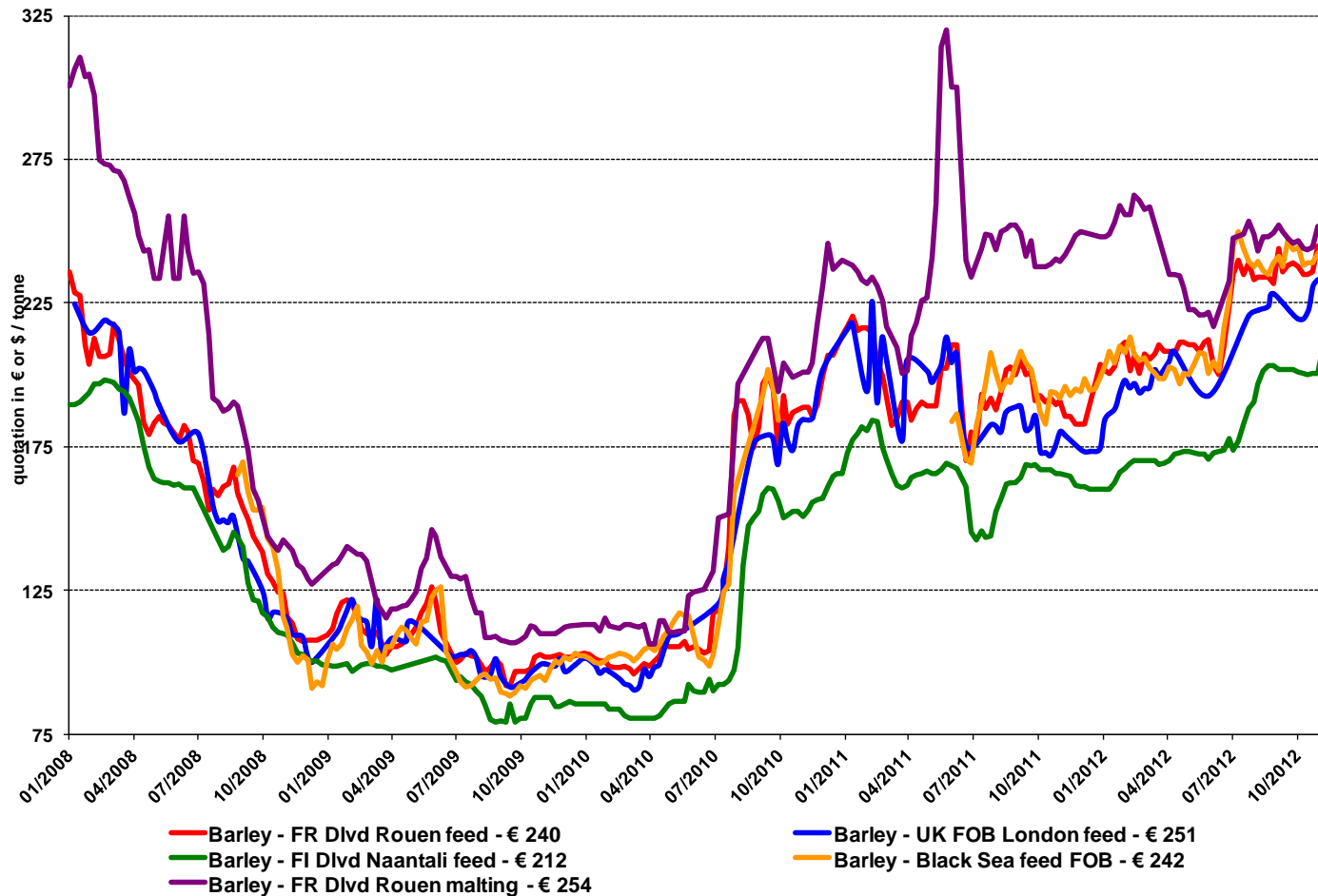
World durum wheat export prices (fob, € per tonne)



World barley: IGC



World barley export prices (fob, € per tonne)



EU barley export commitments 2012/13

