



# **Market situation Cereals**

**AGRI C 5**

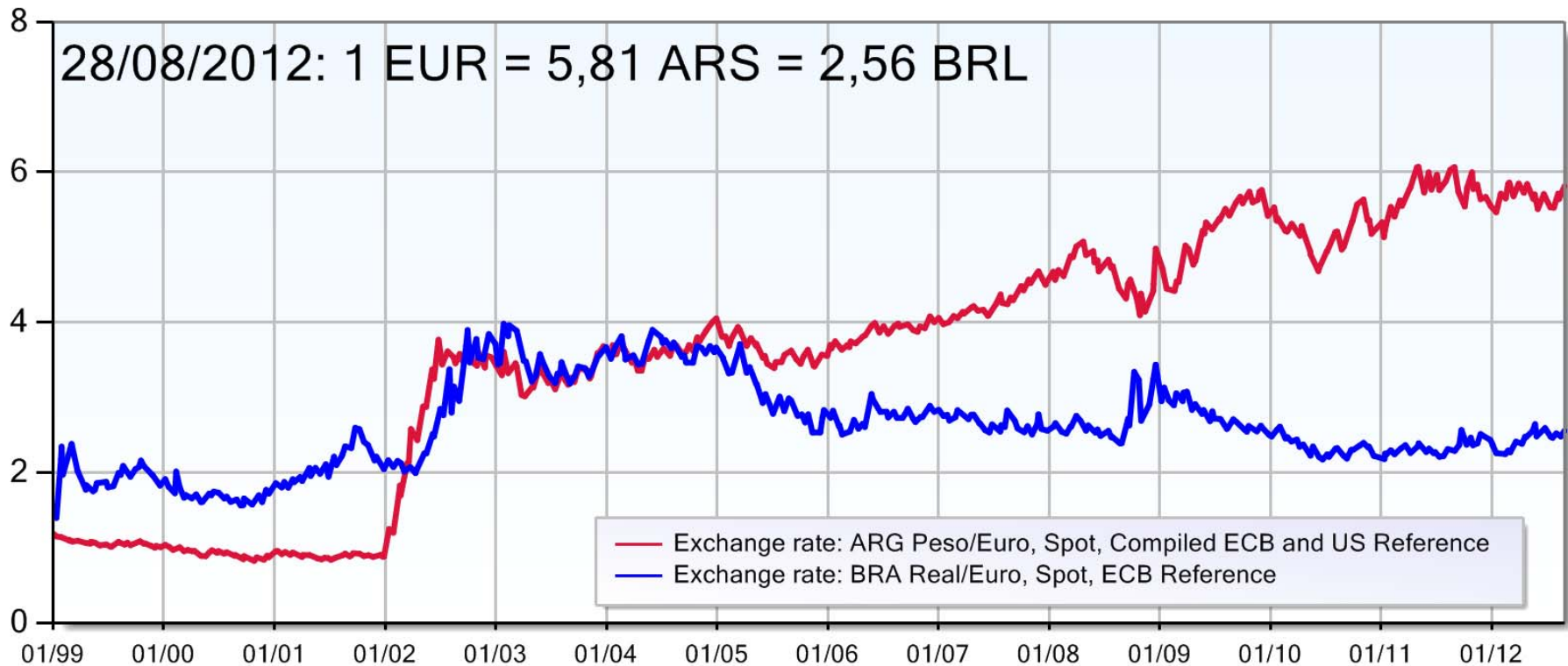
**Management Committee for the Common  
Organisation of Agricultural Markets**

**30 August 2012**

## Euro – Dollar exchange rate



# Euro – Argentine Peso and Brazilian Real exchange rate



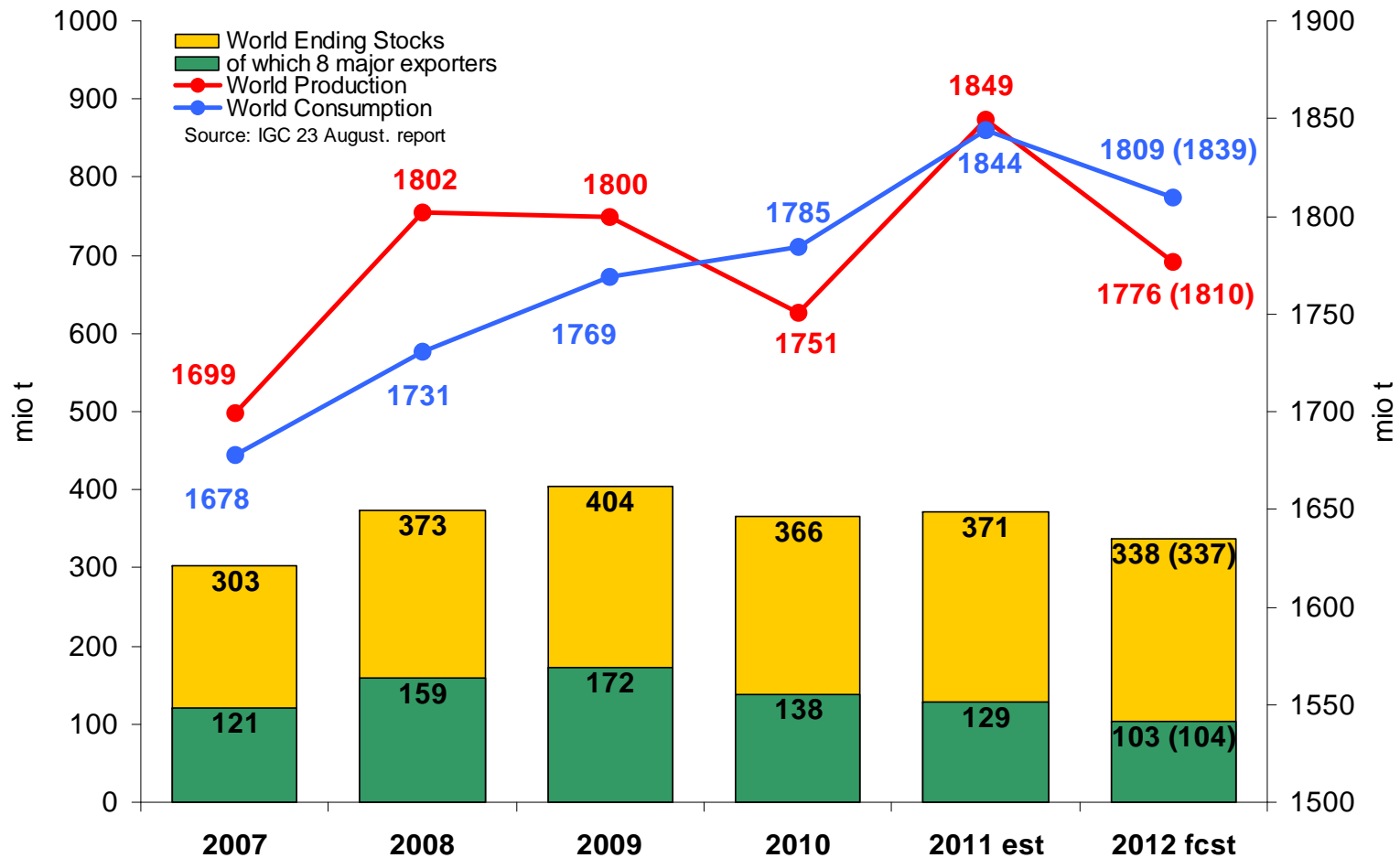
# Crude oil price



# Baltic Dry Index

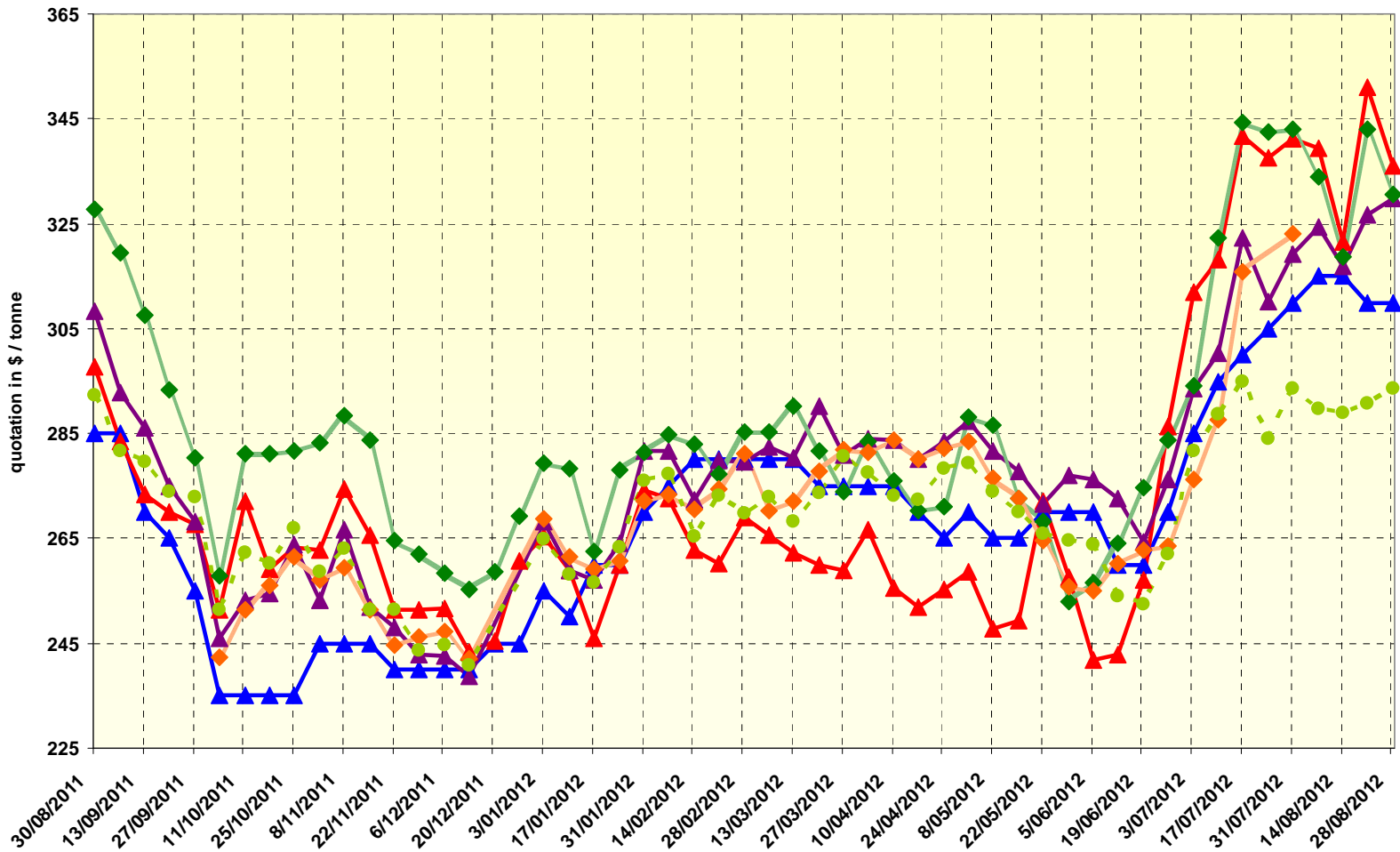


# World cereals: IGC

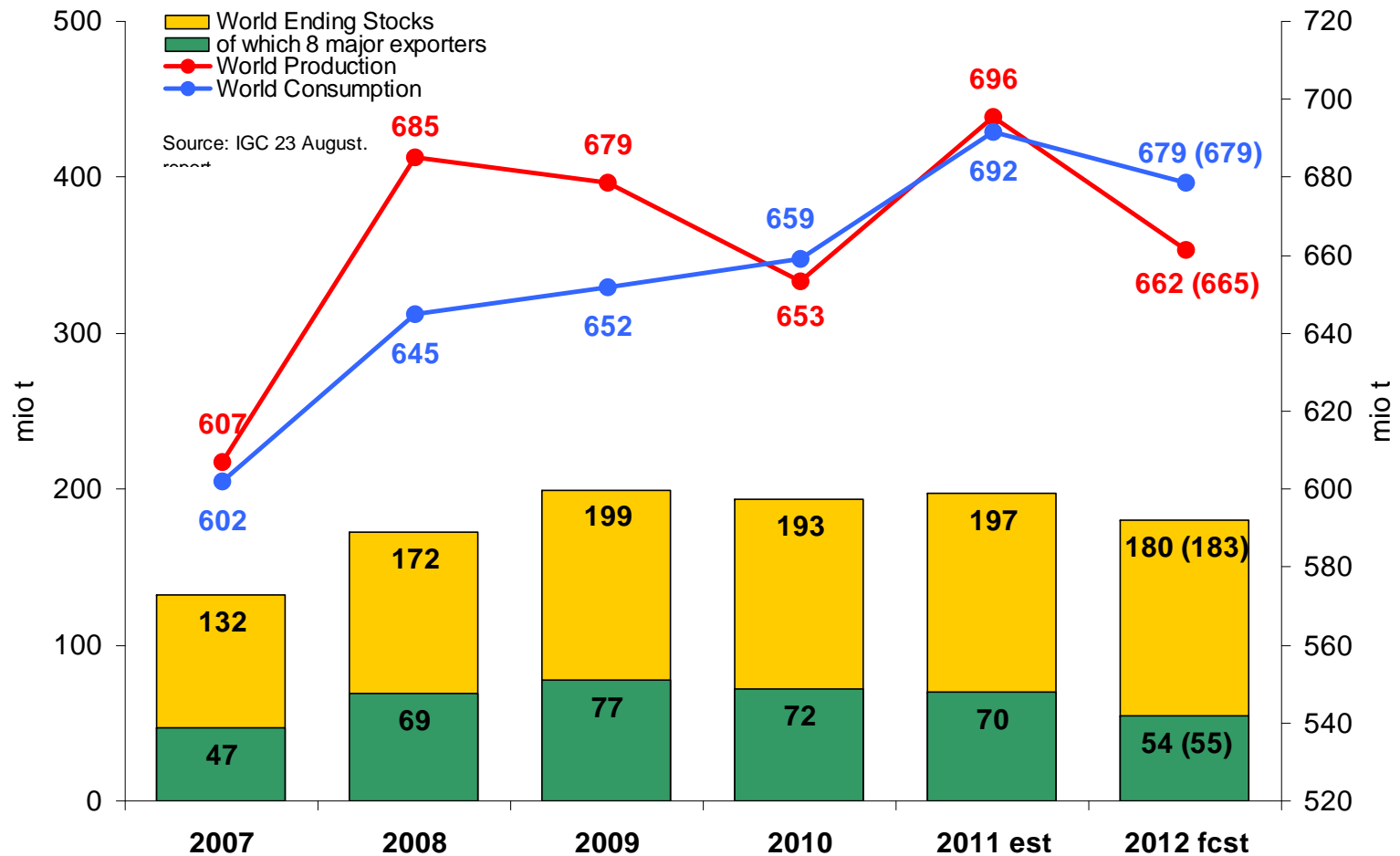


# World cereal prices (\$/t)

- ▲ Wheat - Black Sea Milling - \$ 310
 ▲ Wheat - US SRW Gulf - \$ 336
 ▲ Wheat - FR Rouen - \$ 330
- ◆ Maize - US 3YC Gulf - \$ 330
 ◆ Maize - FR Bordeaux - \$ no quotation
 ● Barley - FR Dlvd Rouen feed - \$ 294



# World wheat: IGC

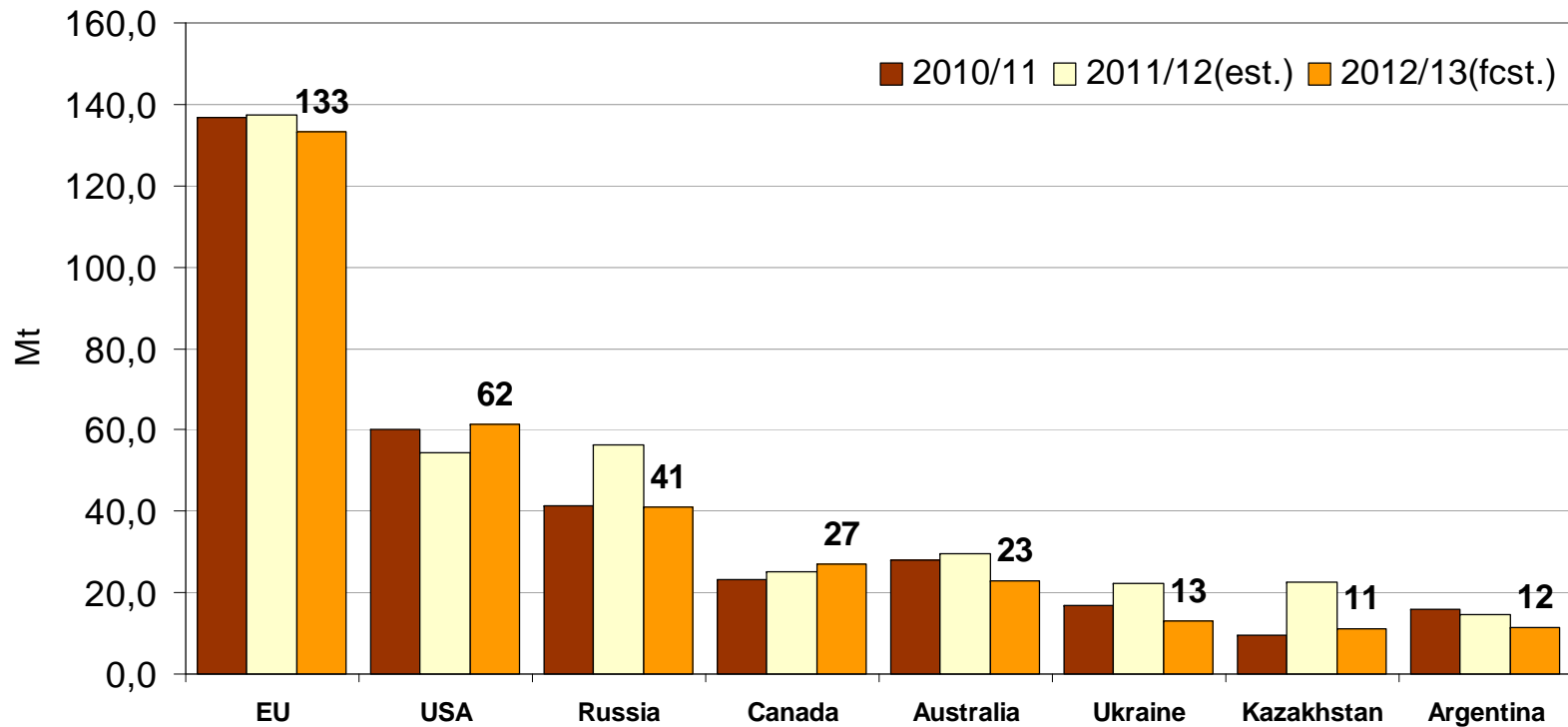




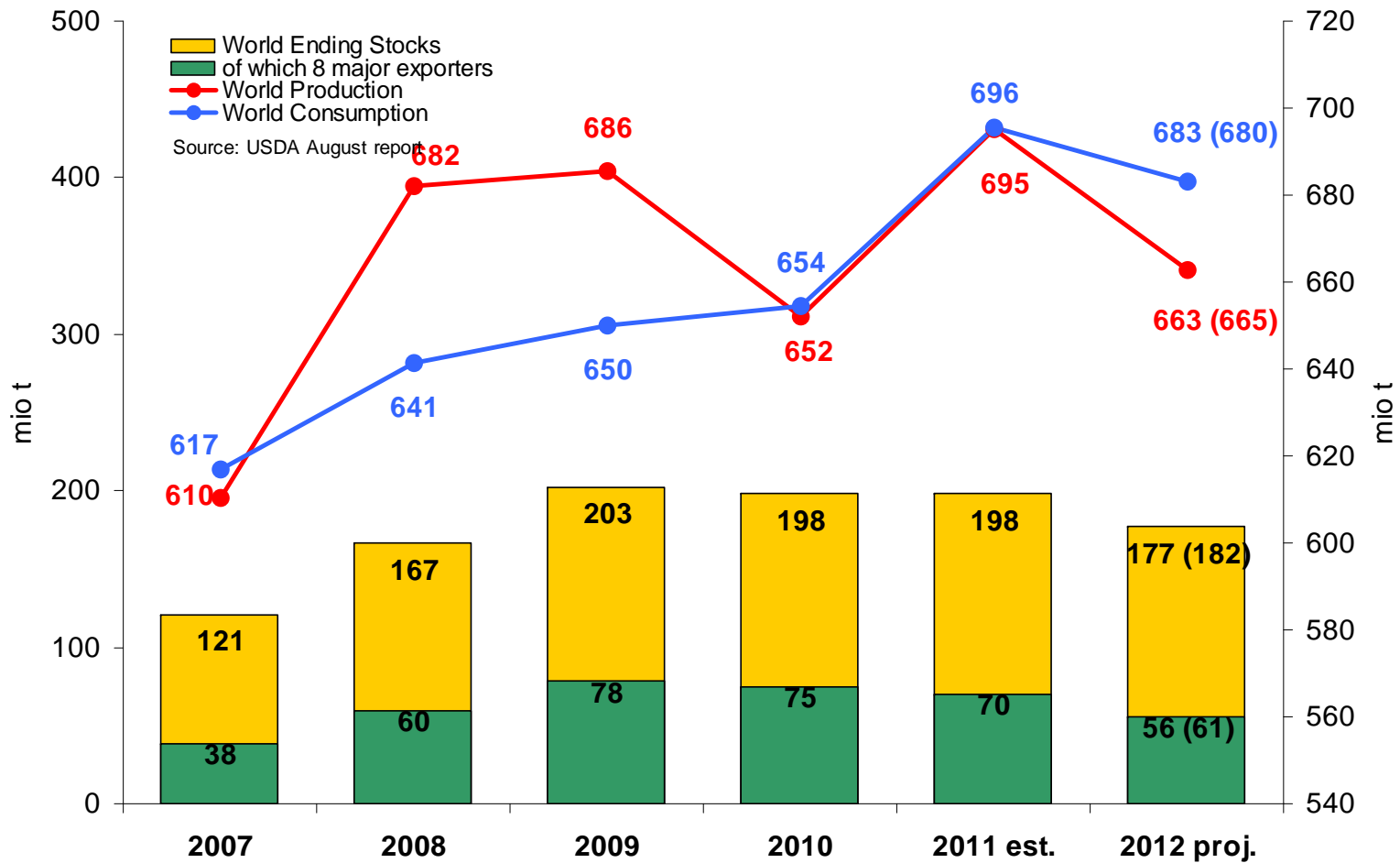
# IGC: Wheat production forecast

## All wheat

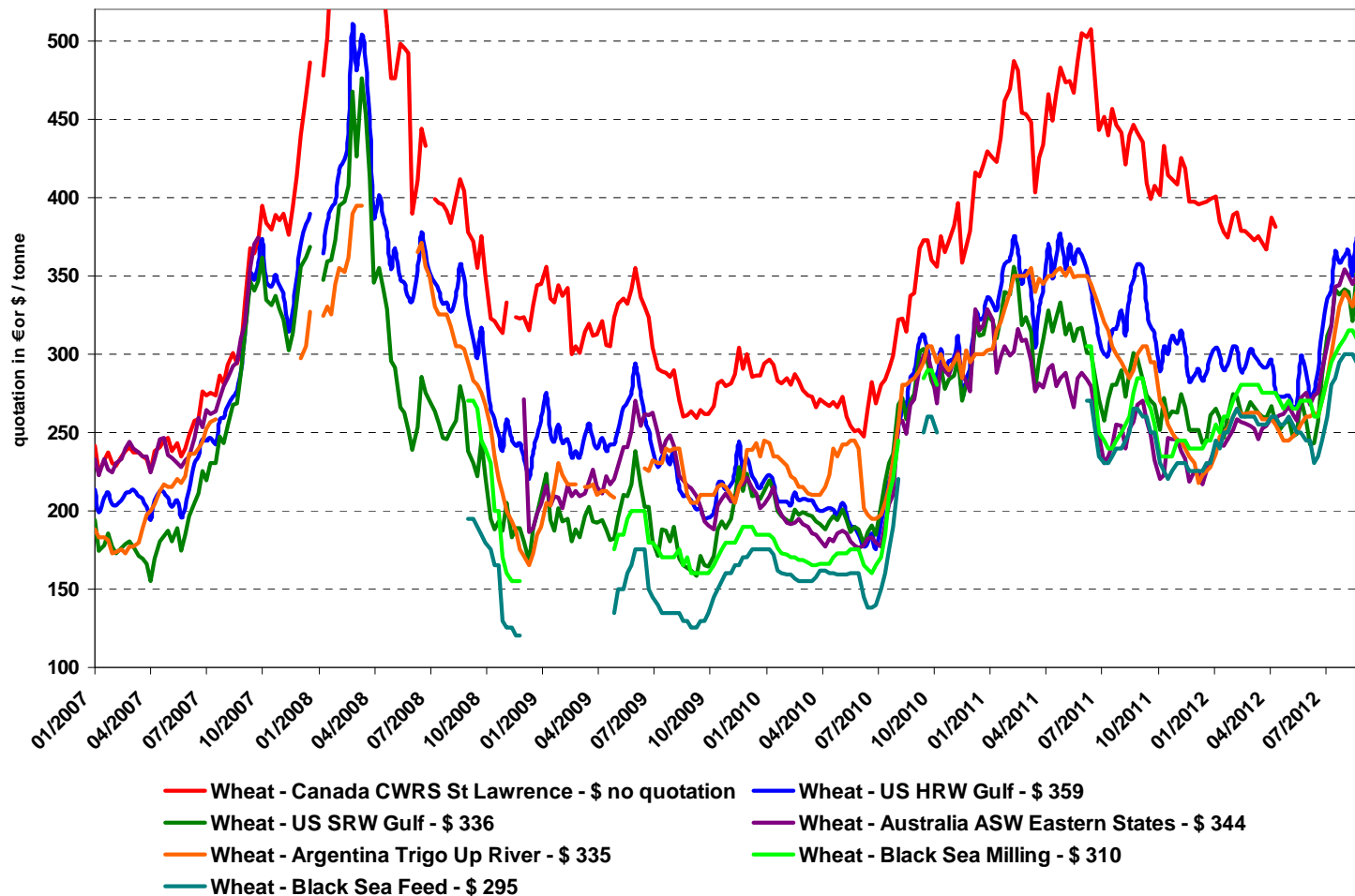
Source: IGC 23 August report



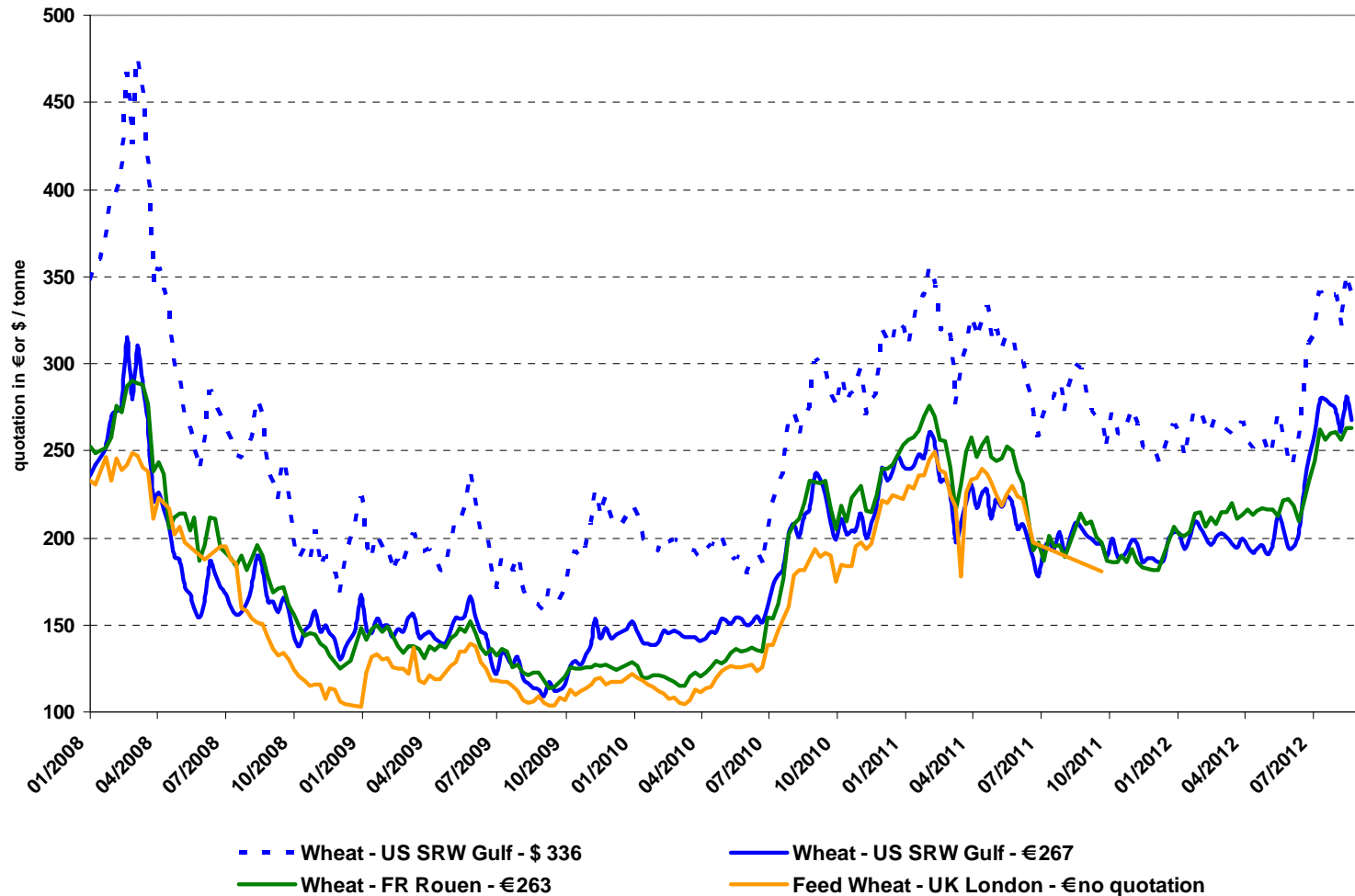
# World wheat: USDA



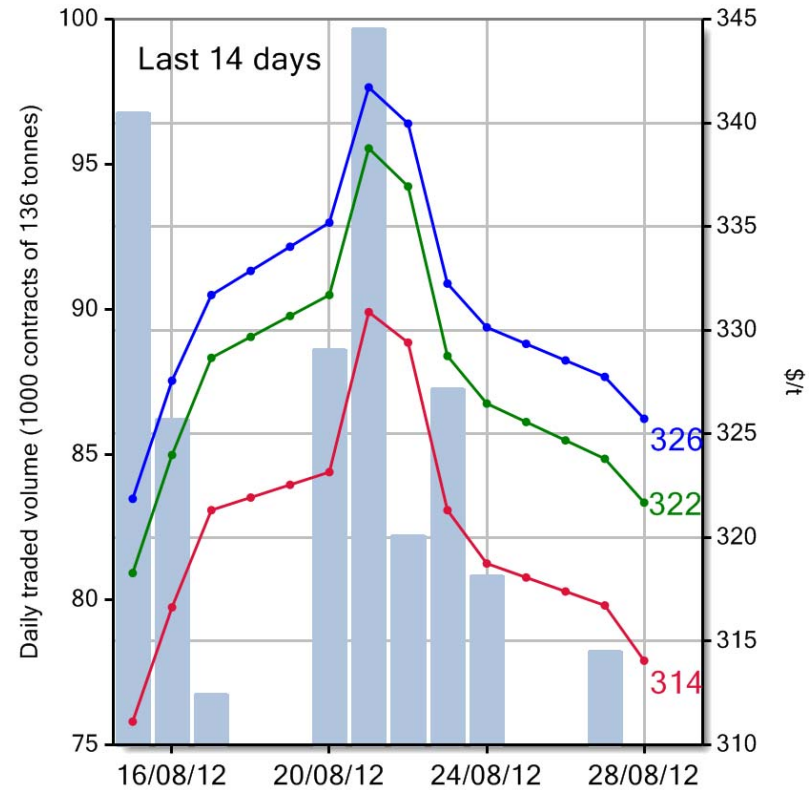
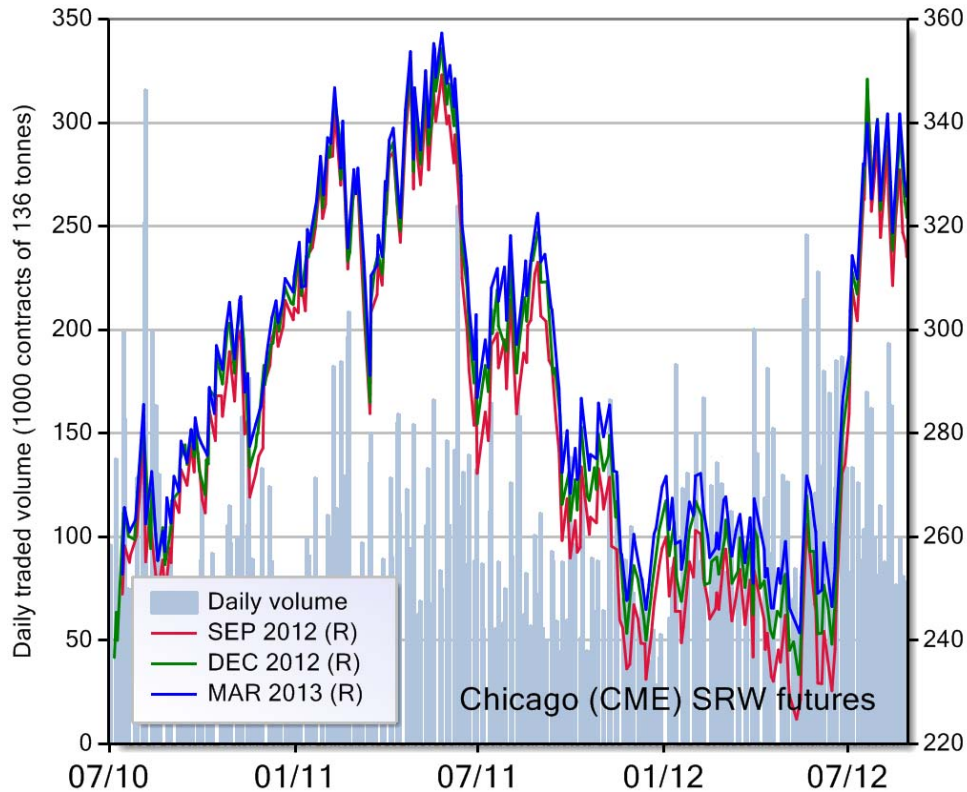
# World wheat export prices (fob, US\$ per tonne)



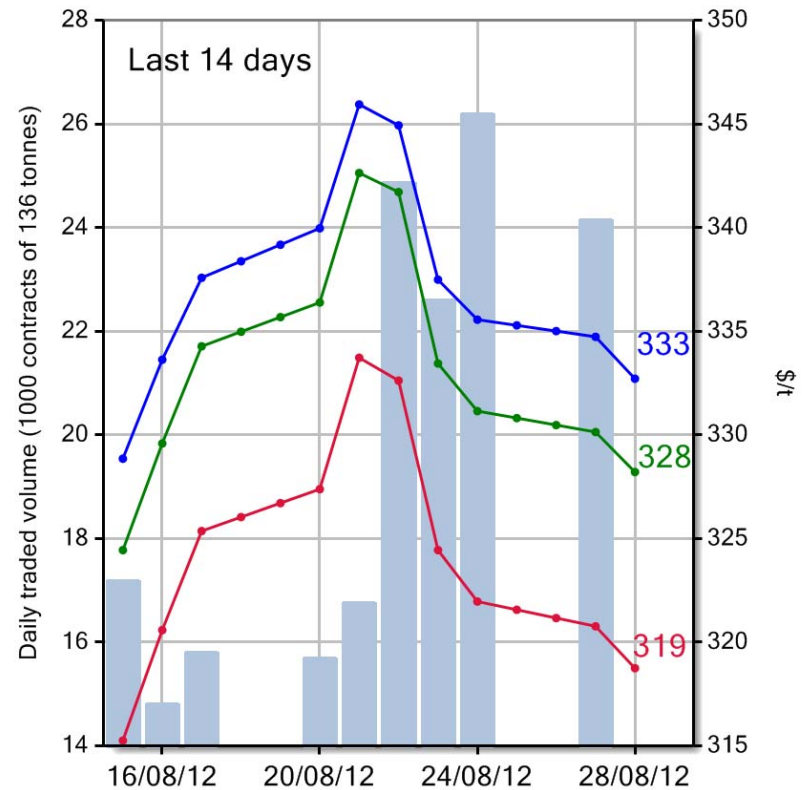
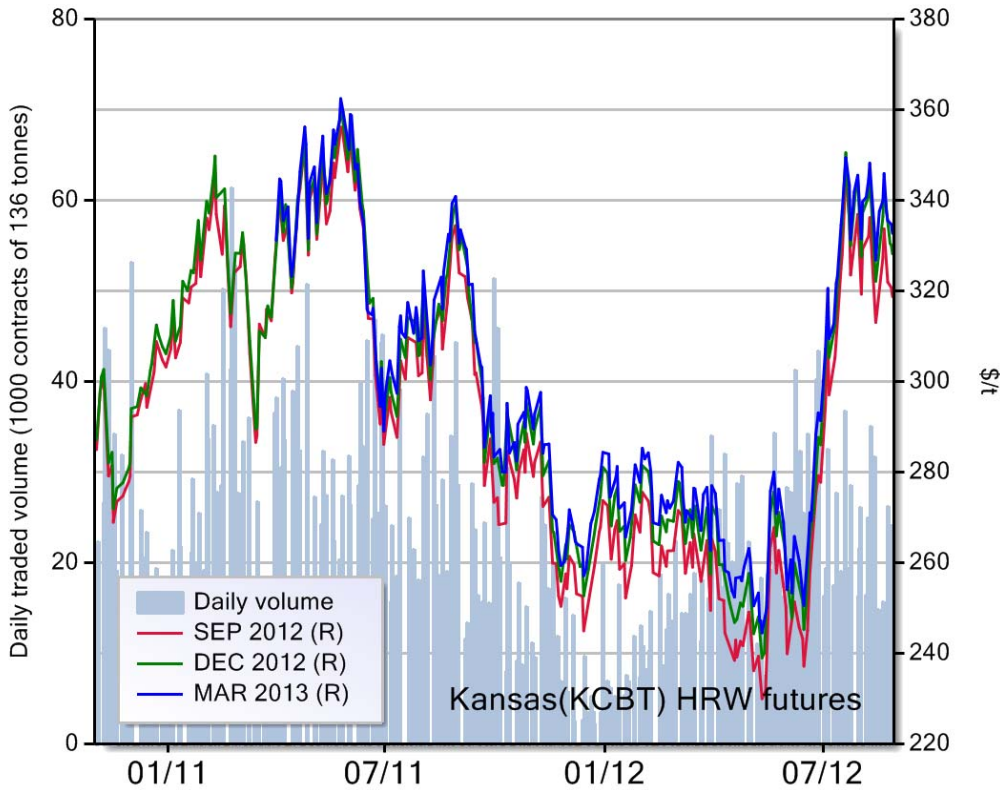
# US vs. EU wheat export prices



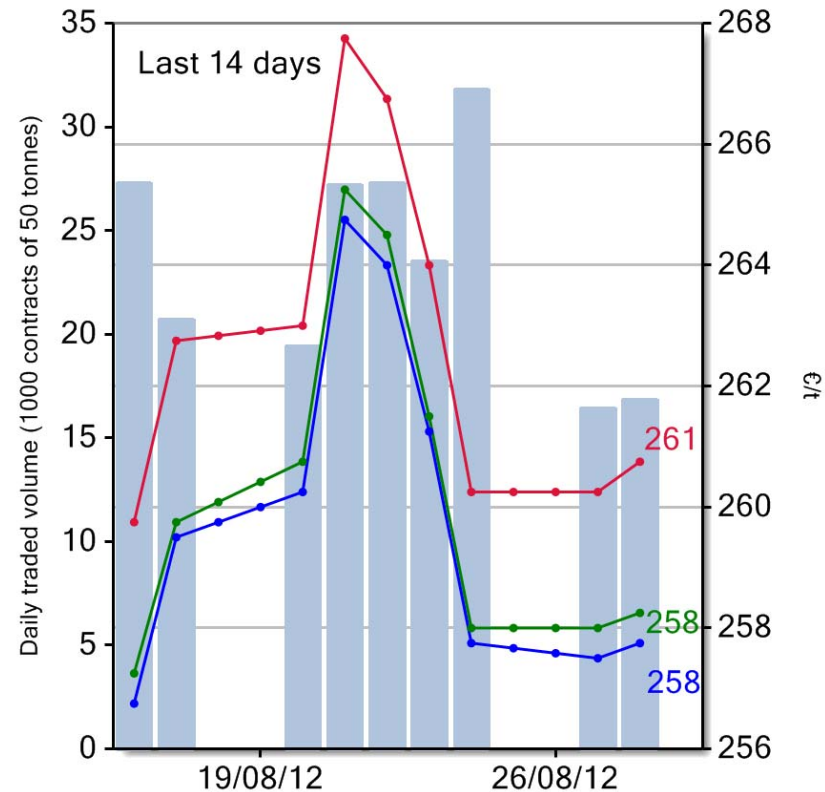
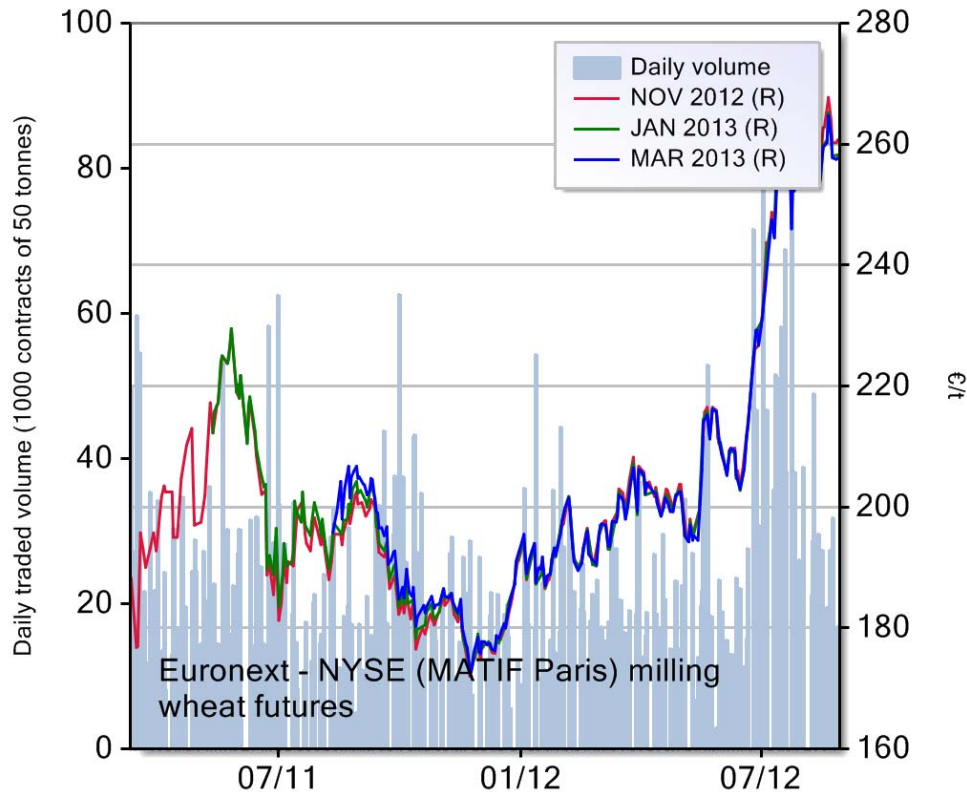
# US CME SRW wheat futures



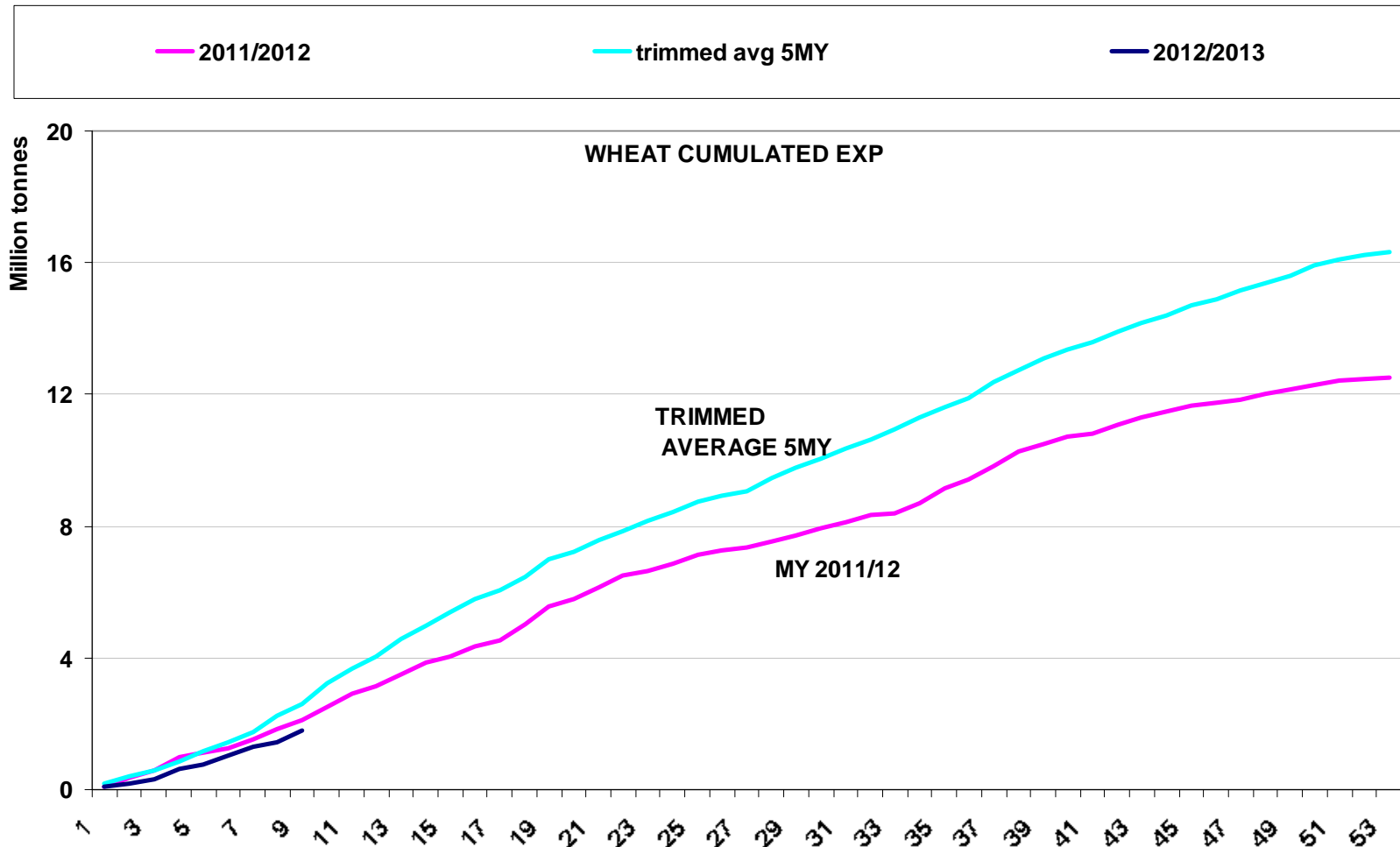
# US KCBT HRW wheat futures



# EU Milling Wheat Futures

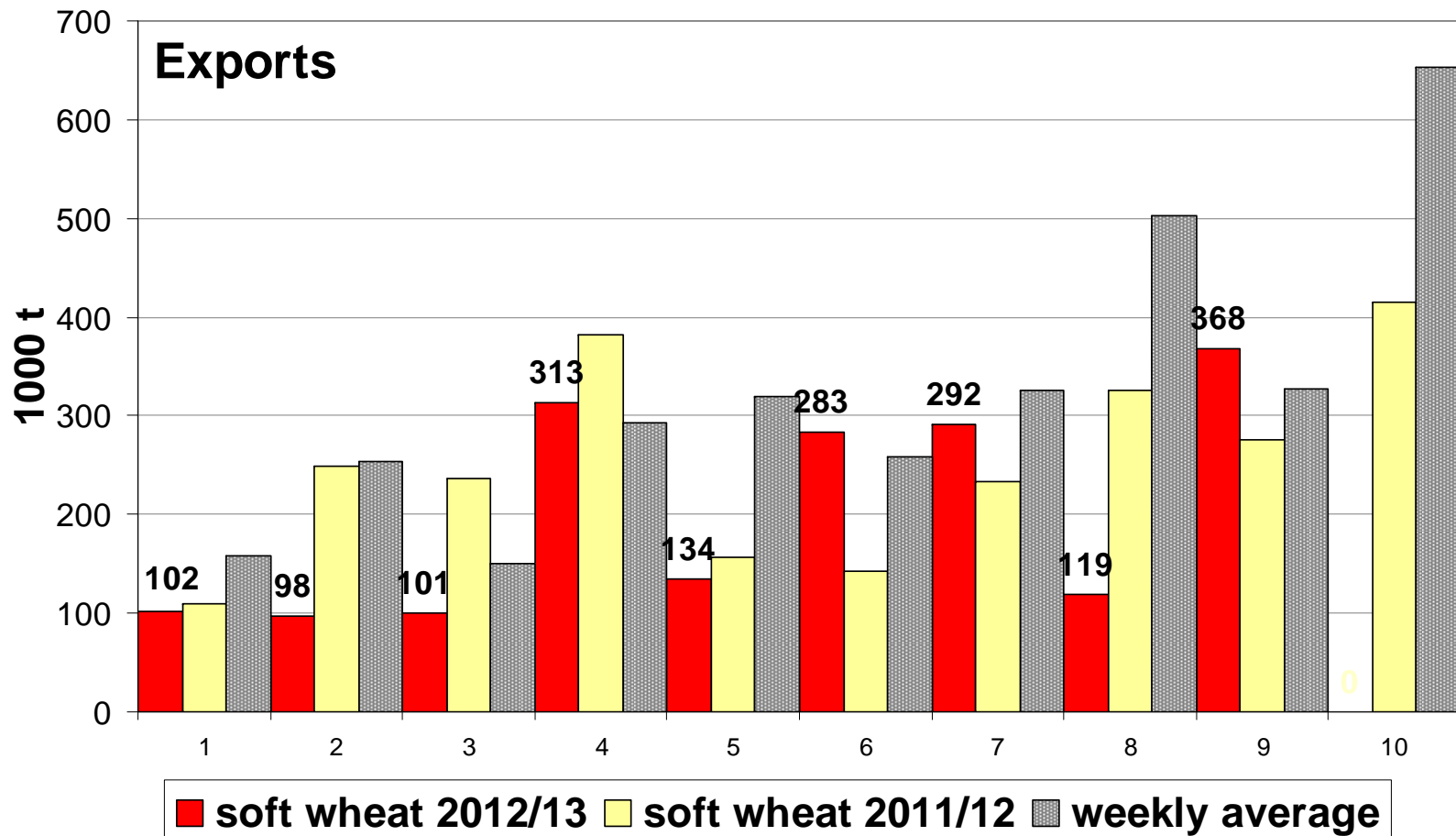


# EU wheat export commitments 2012/13

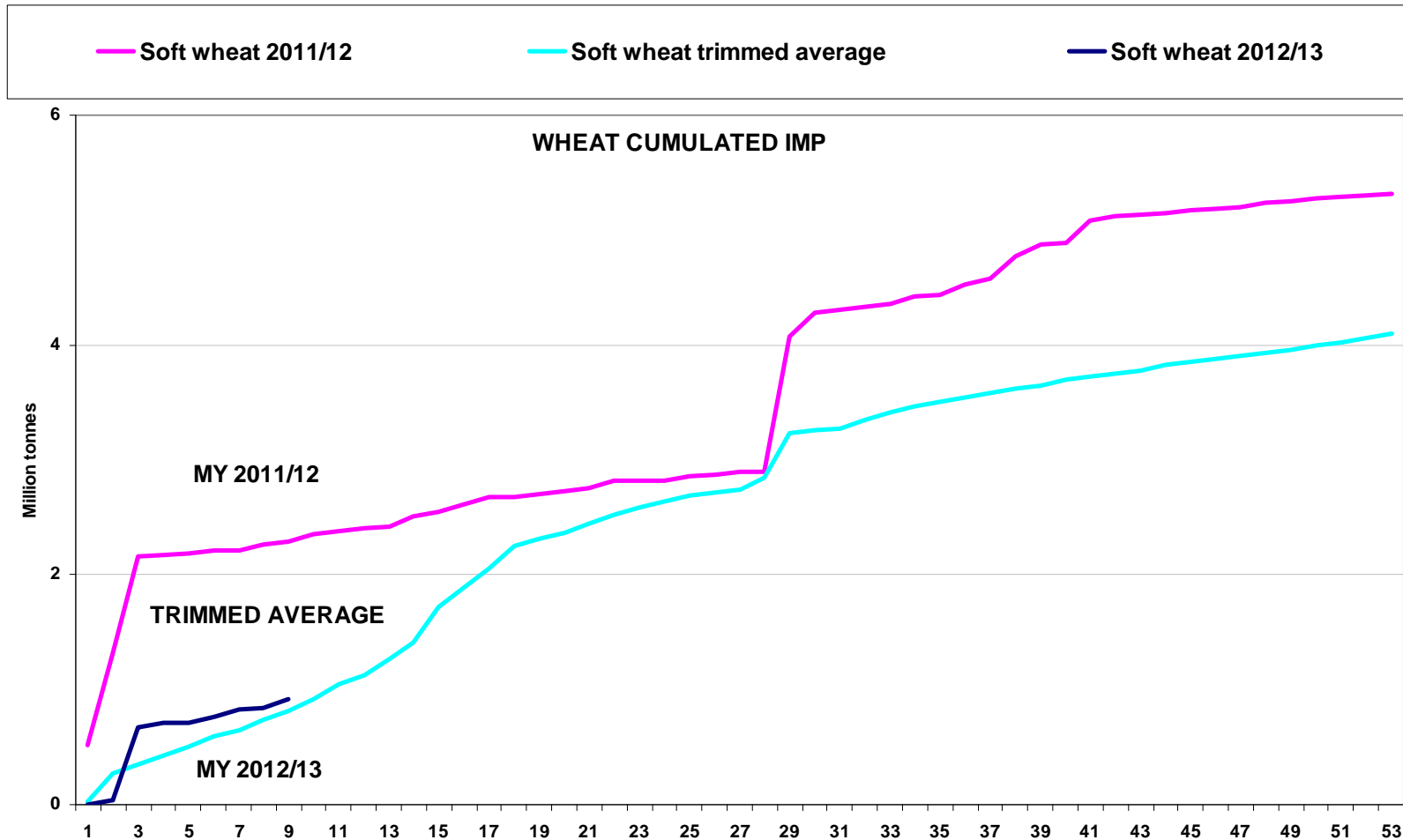




## Weekly common wheat exports 2012/13



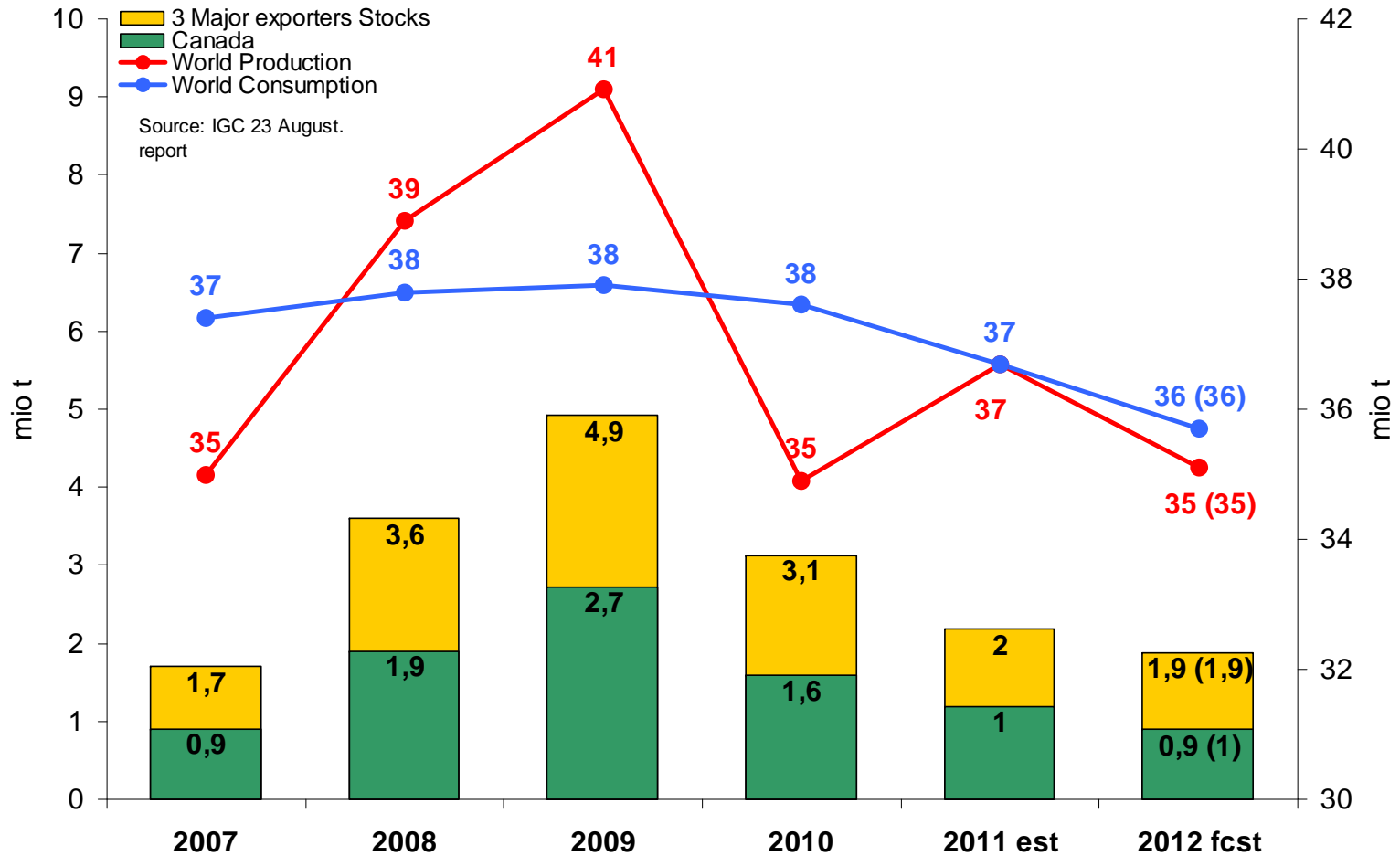
# EU wheat import commitments 2012/13



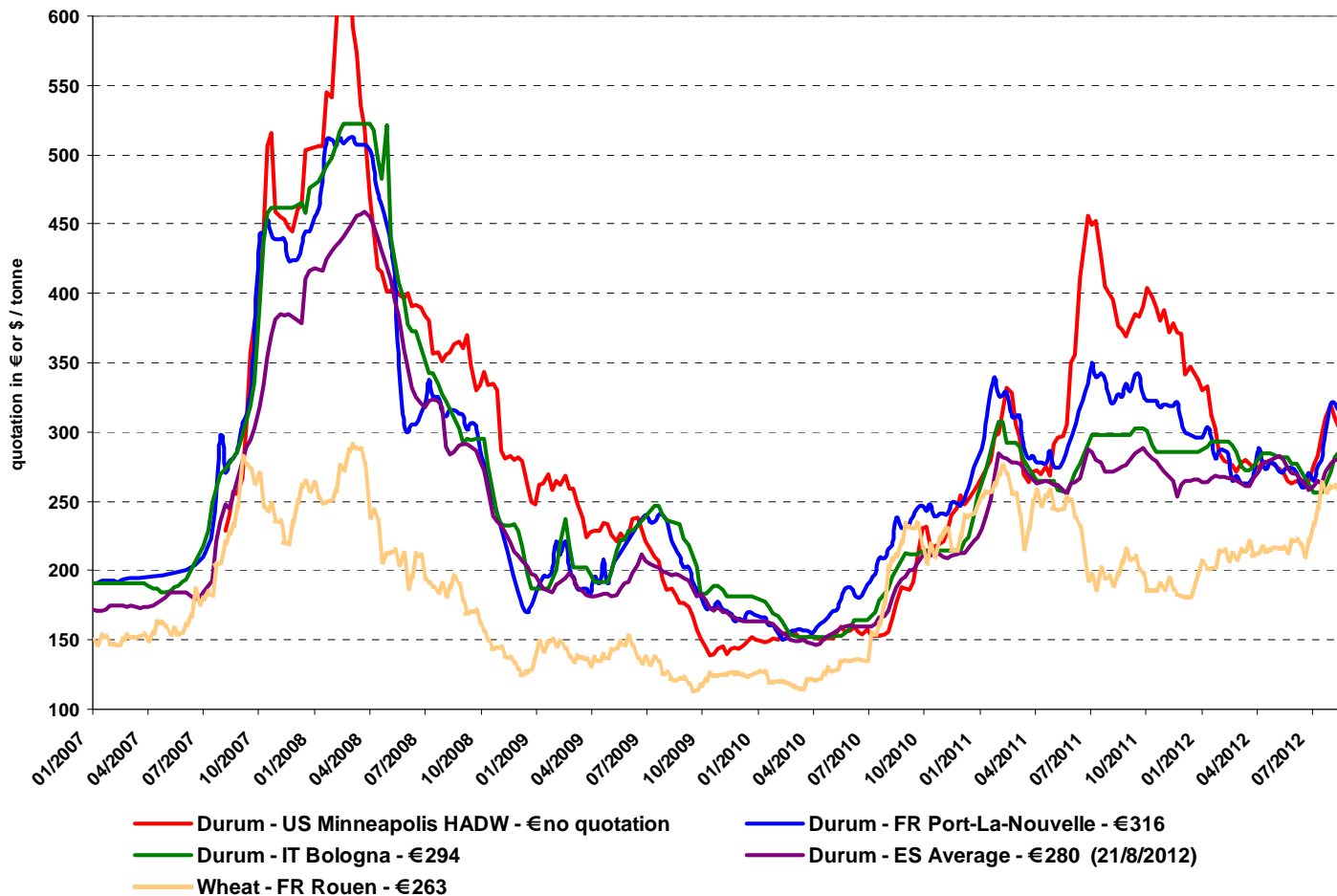
## Selected wheat trade for the past weeks

<i>Country</i>	<i>Crop</i>	<i>Quantity (in tonnes)</i>	<i>Price (in \$)</i>	<i>Origin(s)</i>	<i>Delivery date</i>
<i>Algeria</i>	Milling wheat	350 000	340.50- 341.00 c&f	Optional	Sept/Oct
<i>Algeria</i>	Durum	400 000	410 c&f	Optional (likely from Canada)	Oct
<i>Egypt</i>	Wheat	180 000	319.00- 323.38 fob	Russia Romania	Sept
<i>Jordan</i>	Wheat	100 000	344 c&f	Optional (likely Black Sea)	n/a
<i>Saudi Arabia</i>	Milling Wheat	290 000	366.46- 379.50 c&f	EU, Australia and North and South America	Oct/Nov

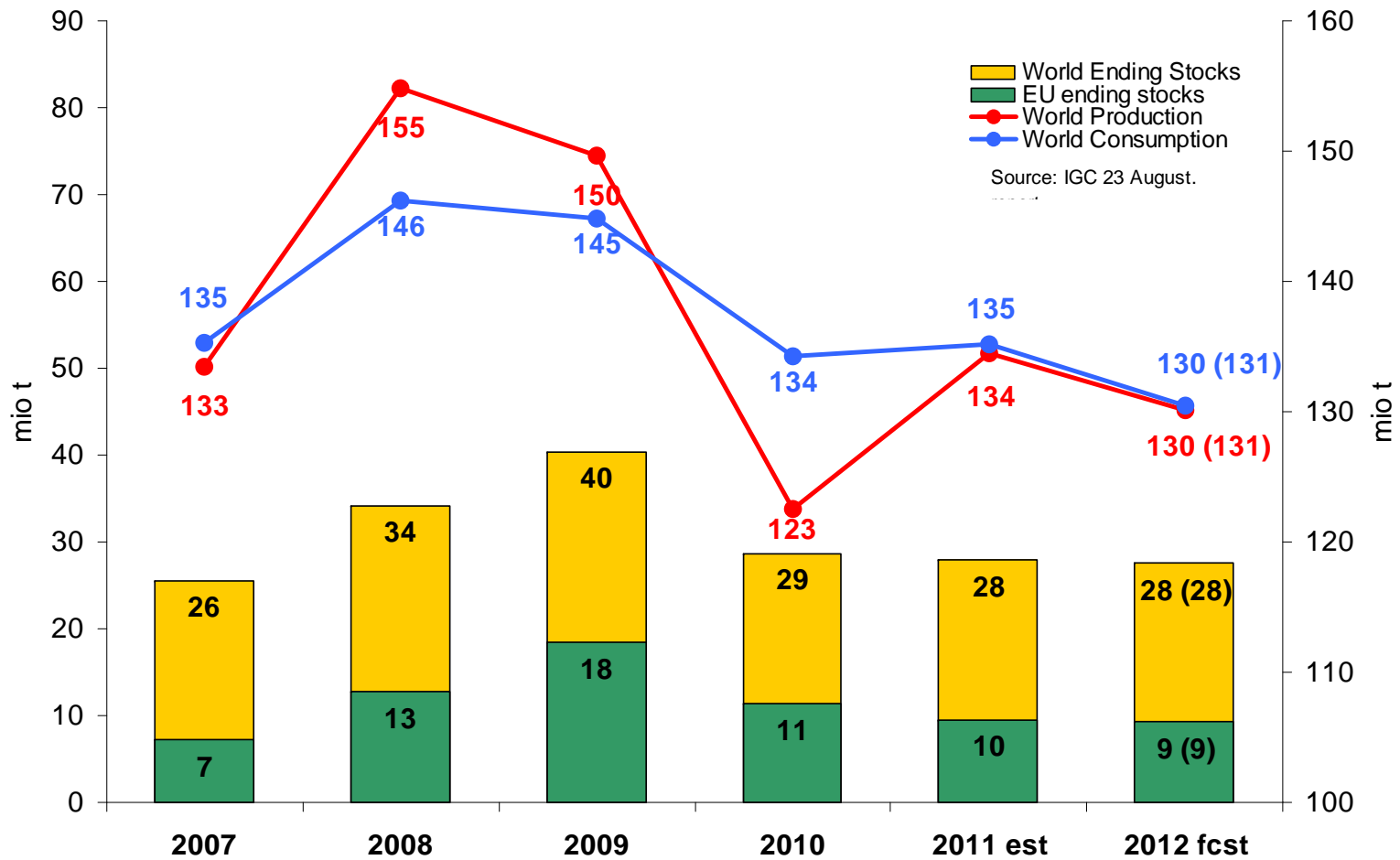
# World durum wheat: IGC



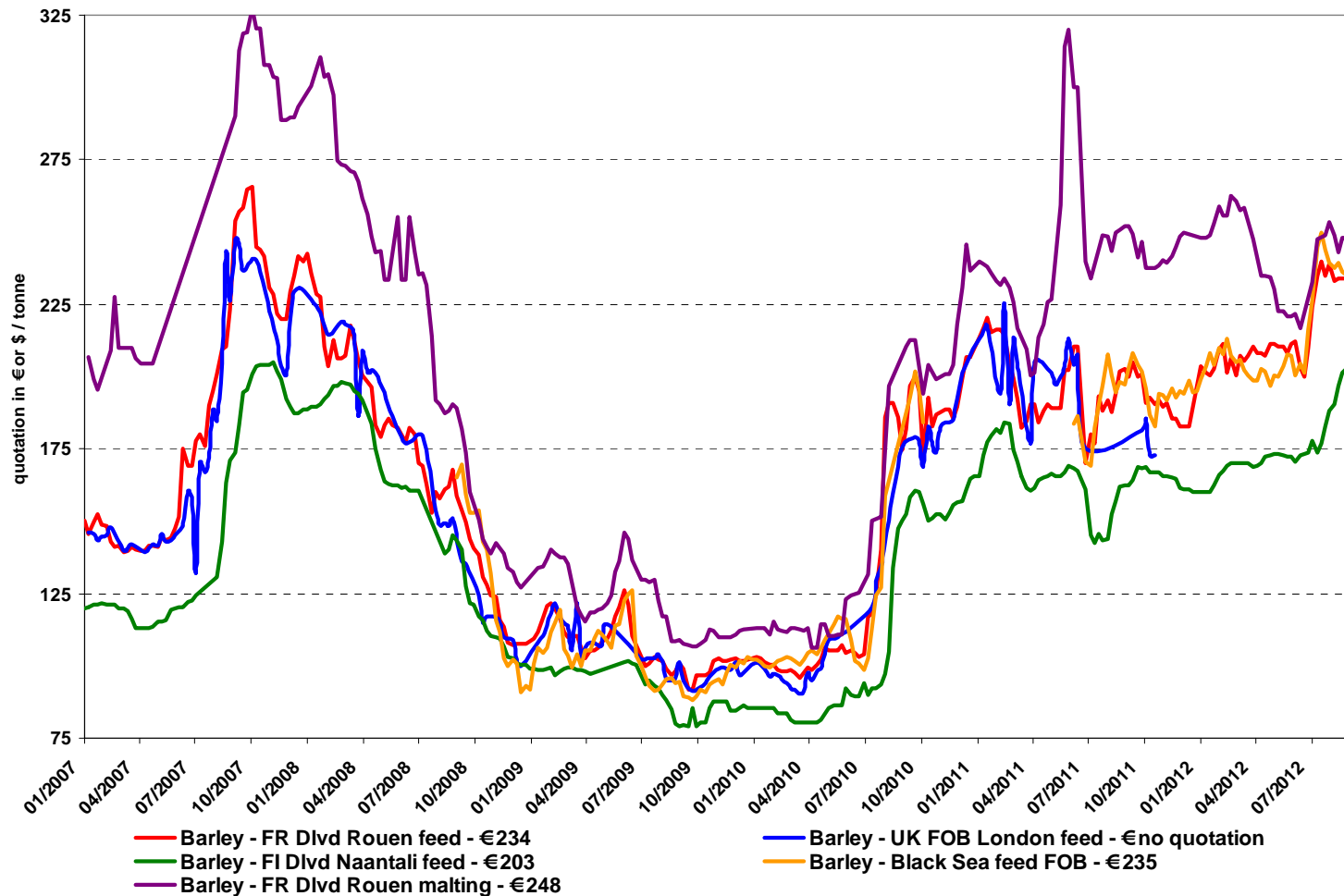
## World durum wheat export prices (fob, € per tonne)



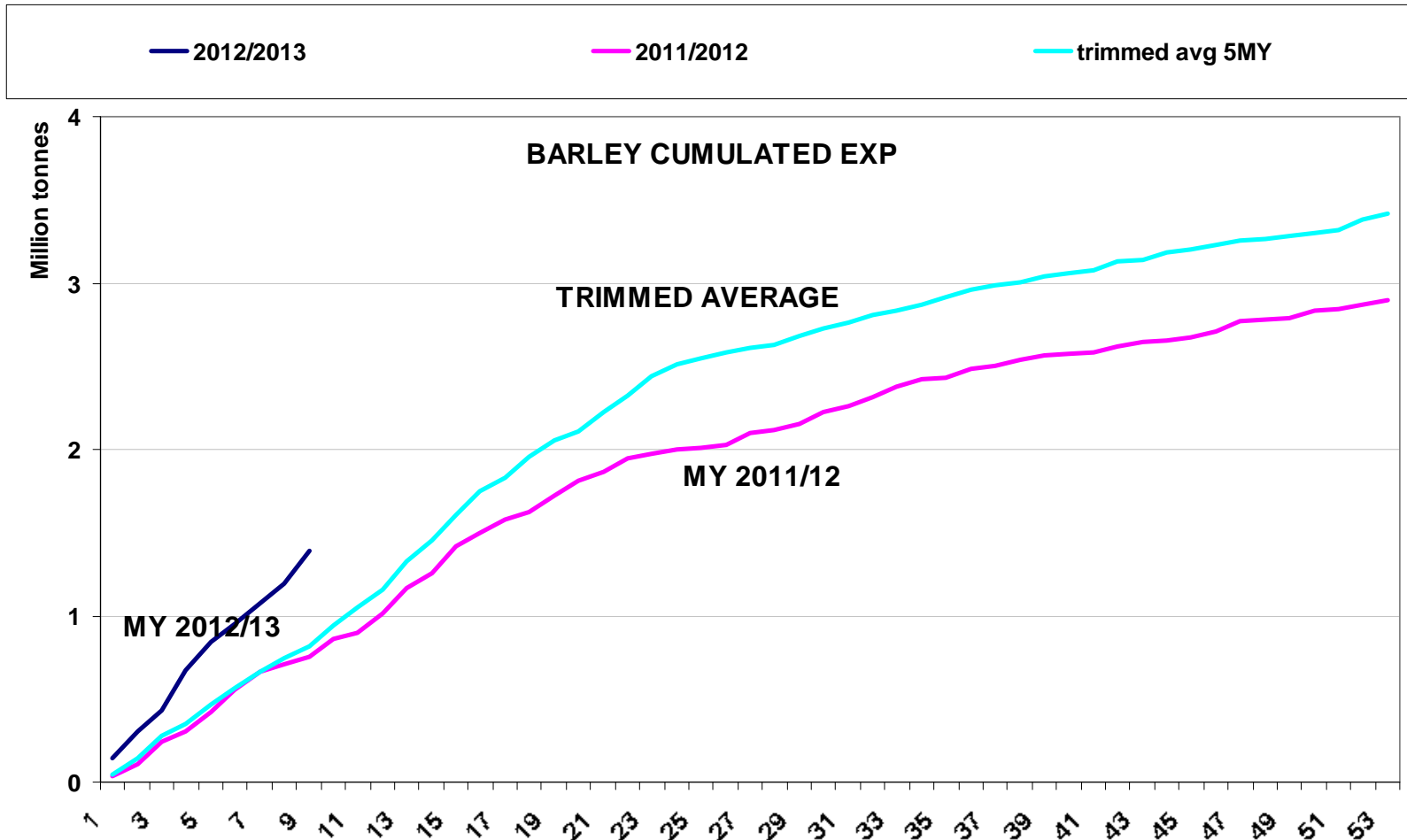
# World barley: IGC



# World barley export prices (fob, € per tonne)

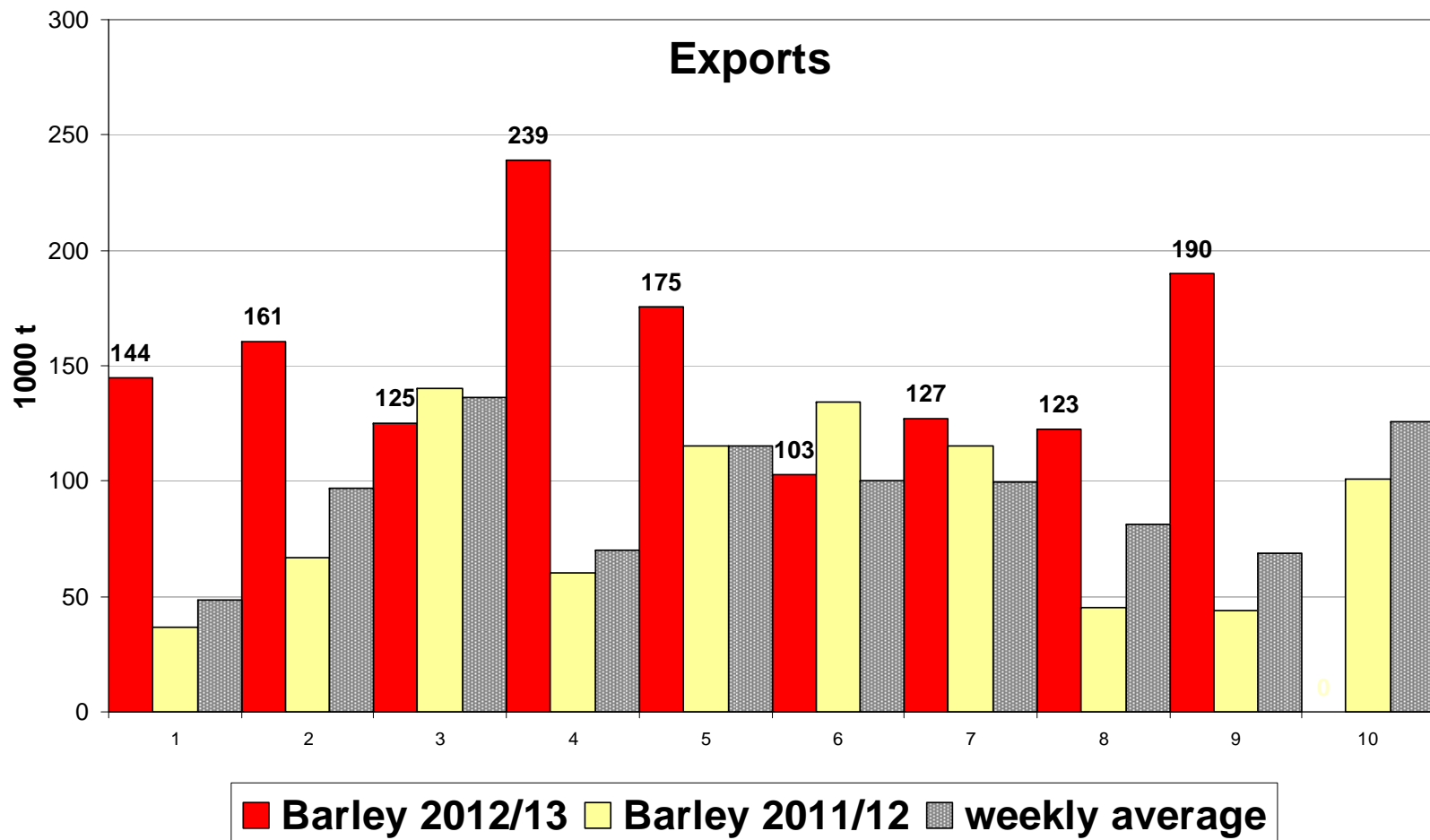


# EU barley export commitments 2012/13

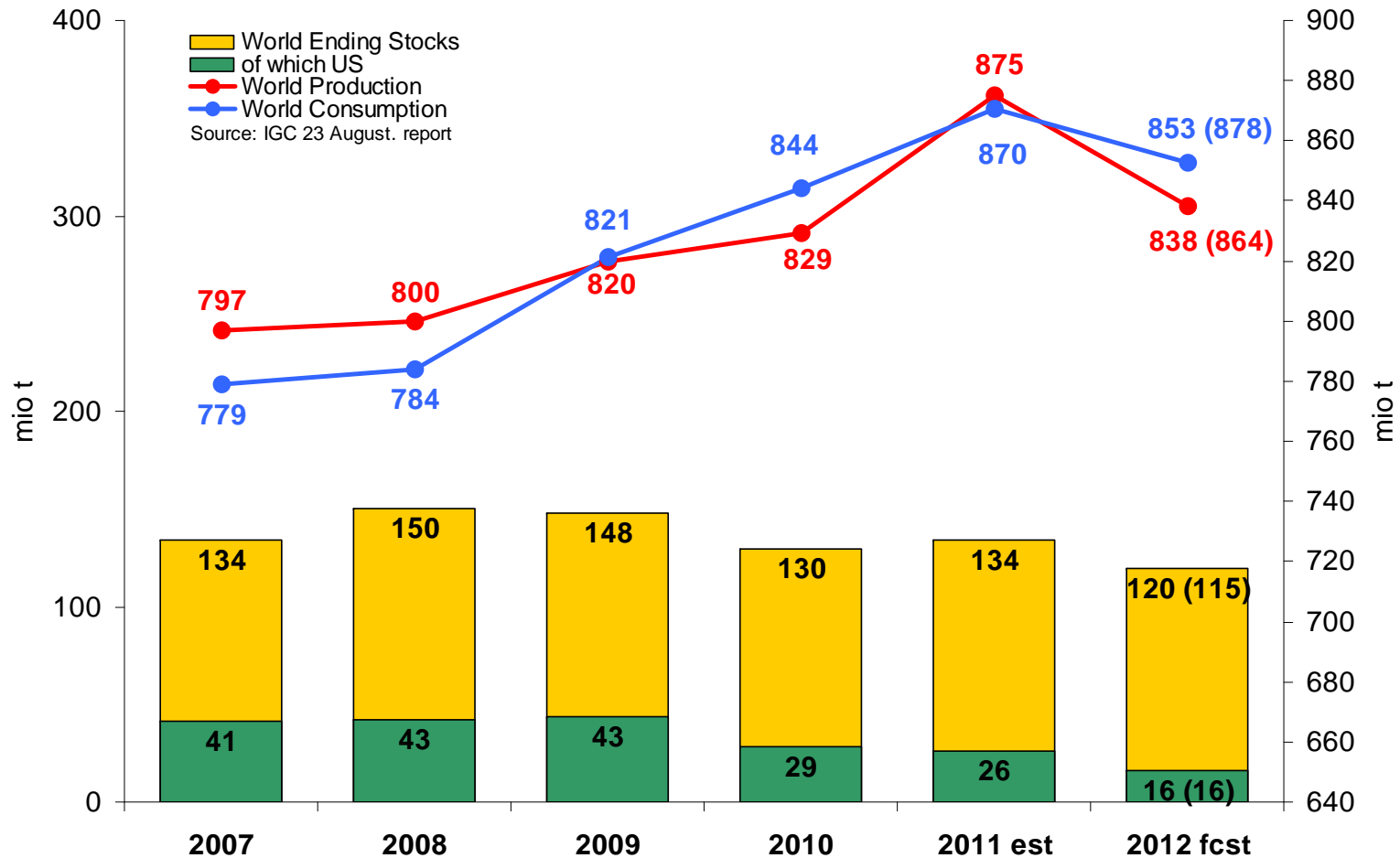




## EU weekly barley exports in 2012/13



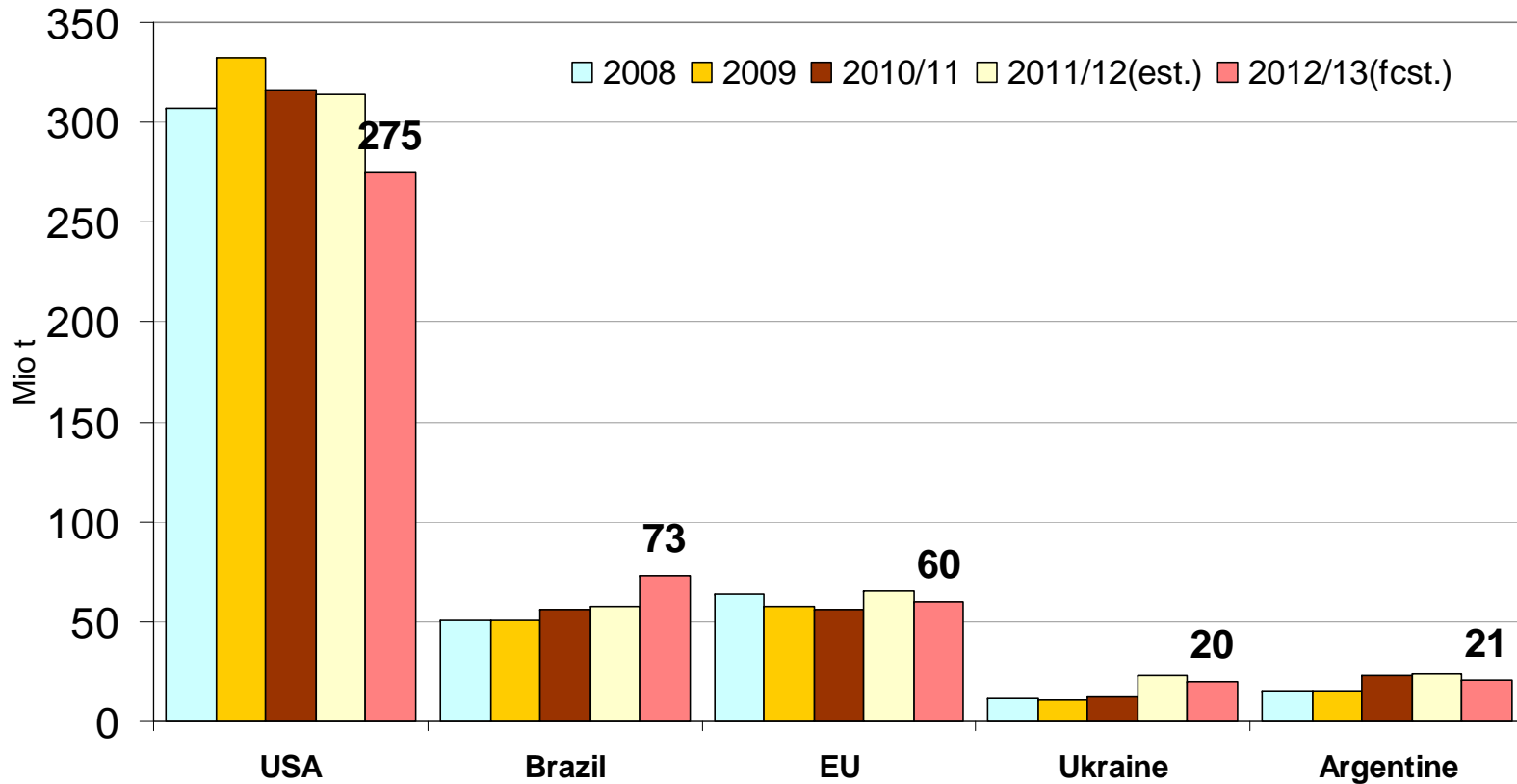
# World maize: IGC



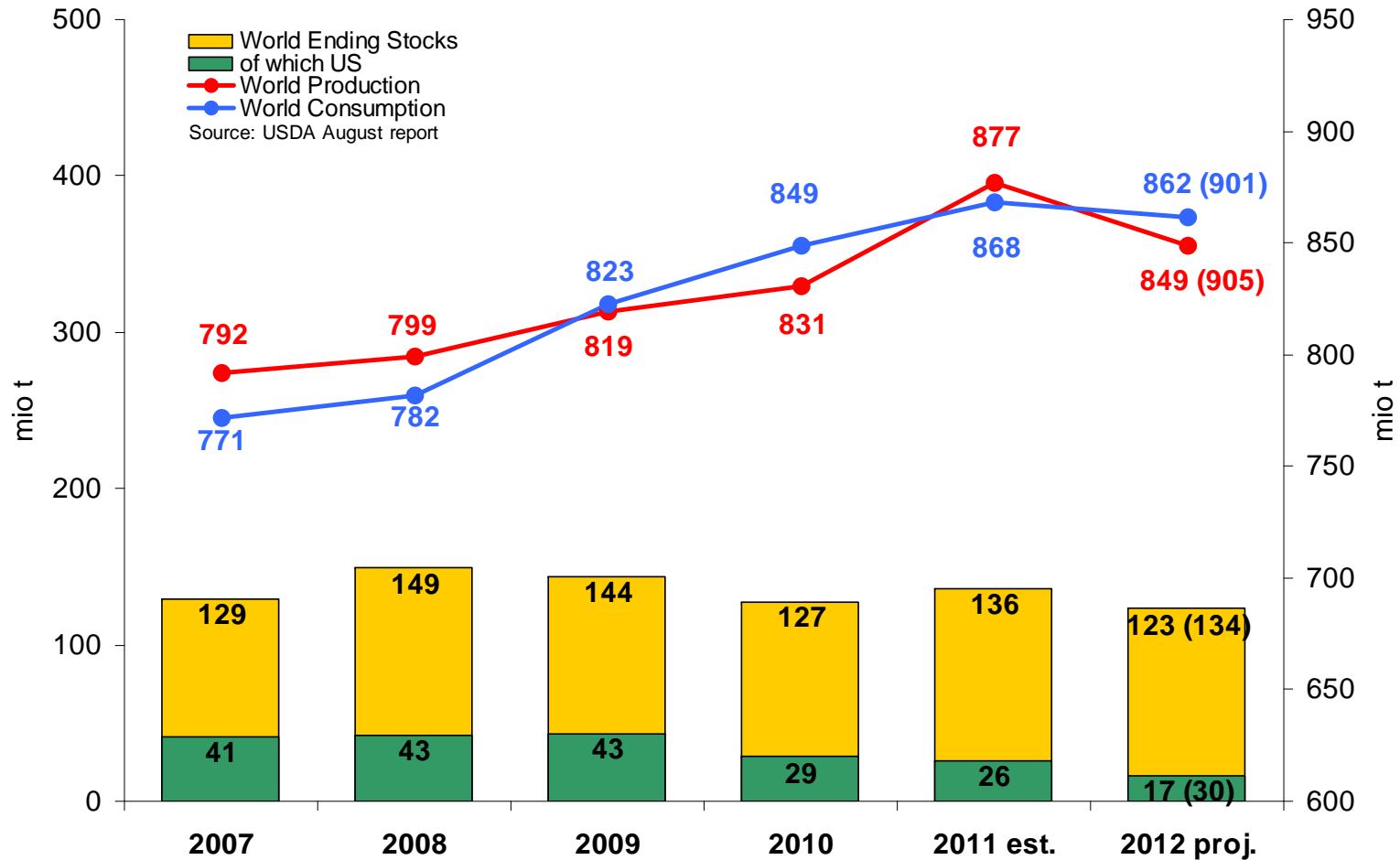
# IGC: maize production forecast

## Maize

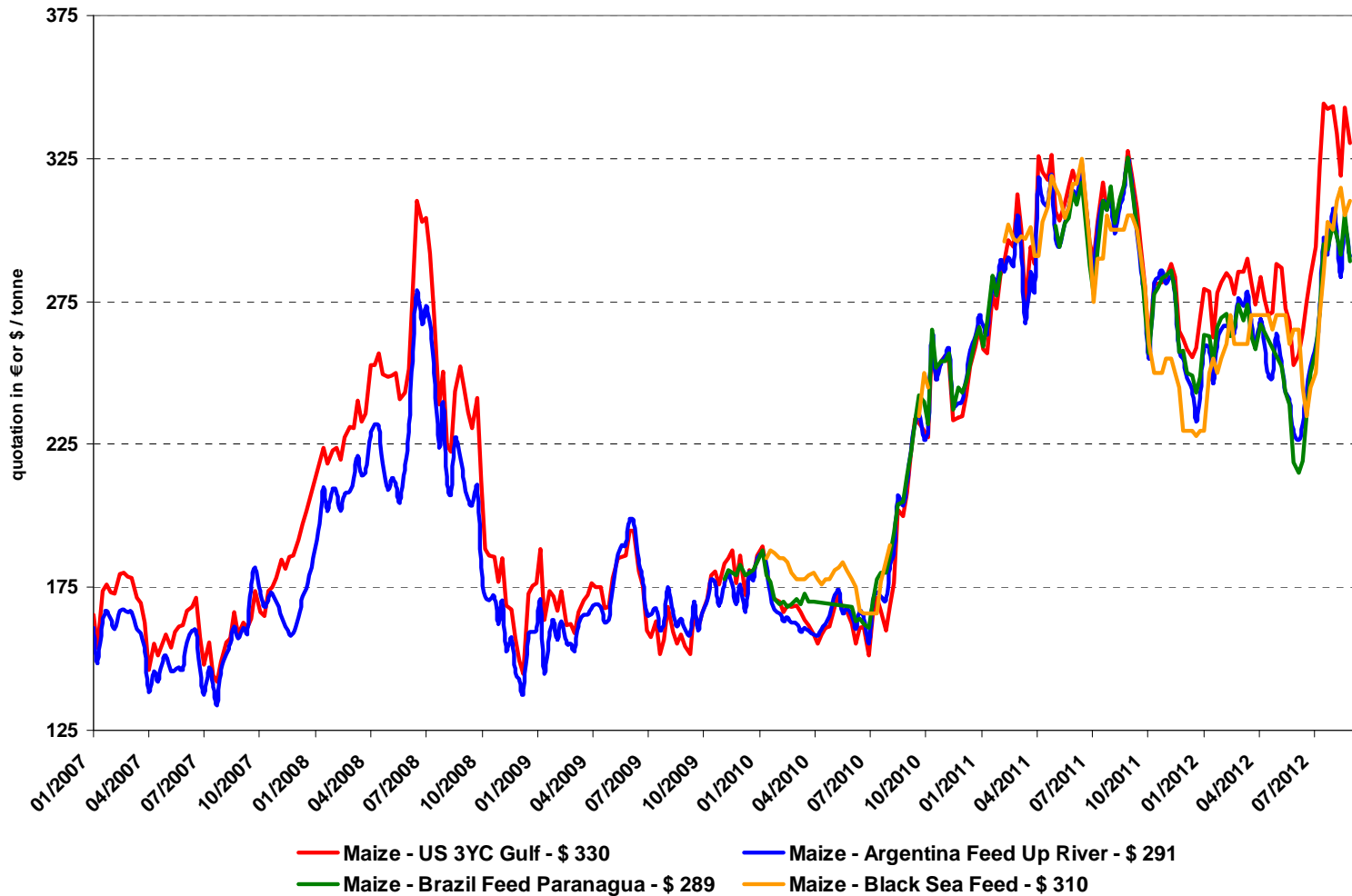
Source: IGC 23 August. report



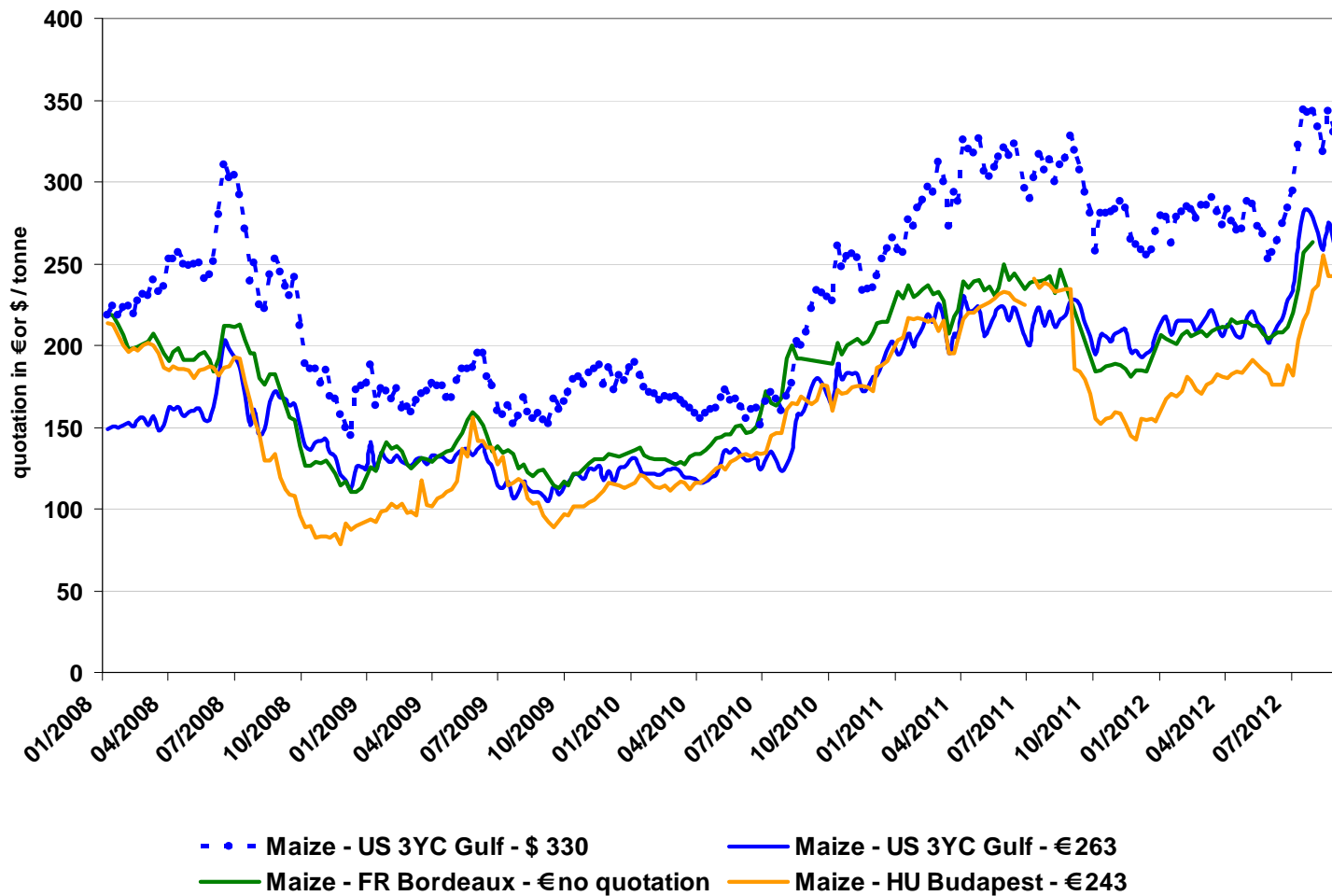
# World maize: USDA



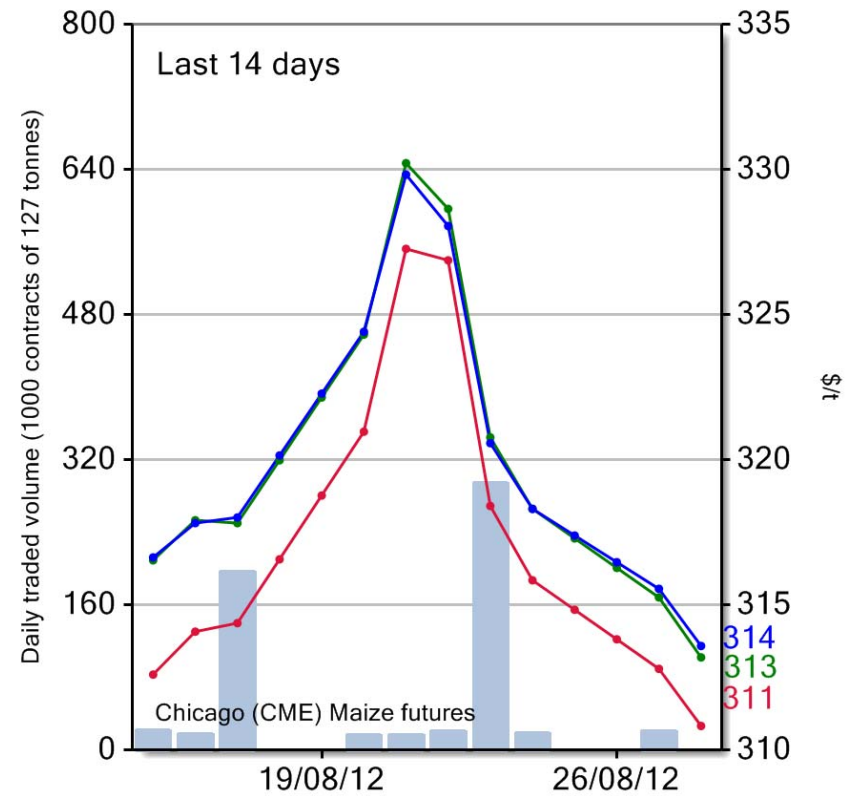
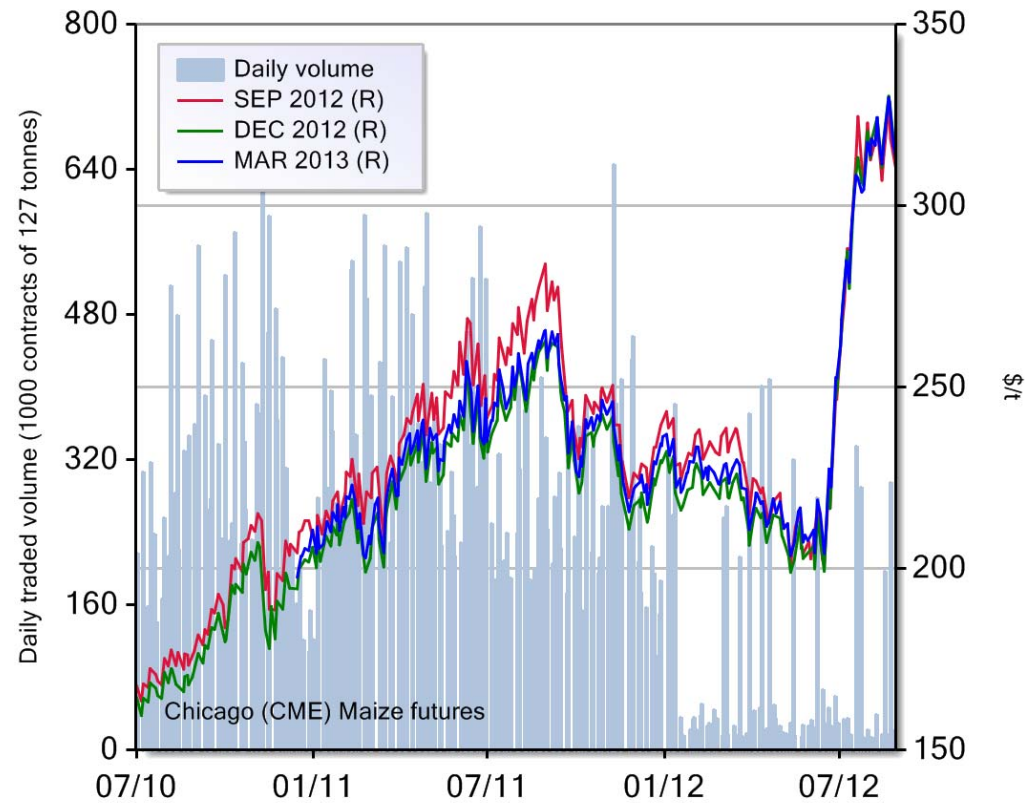
# World maize export prices (fob, US\$ per tonne)



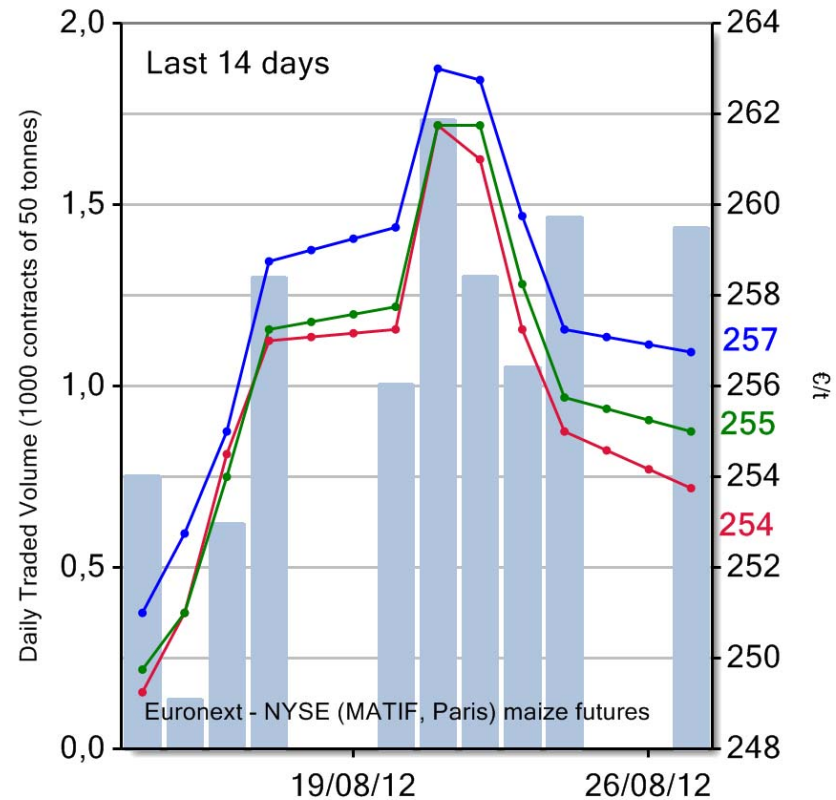
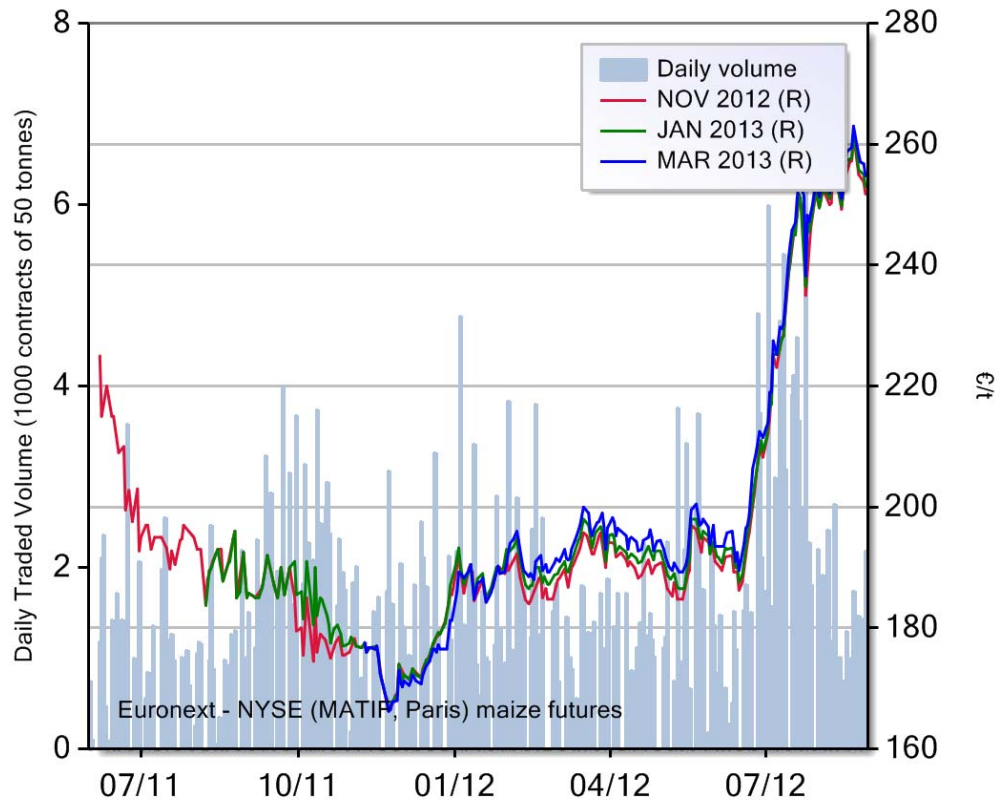
# US vs. EU maize prices



# CME maize futures

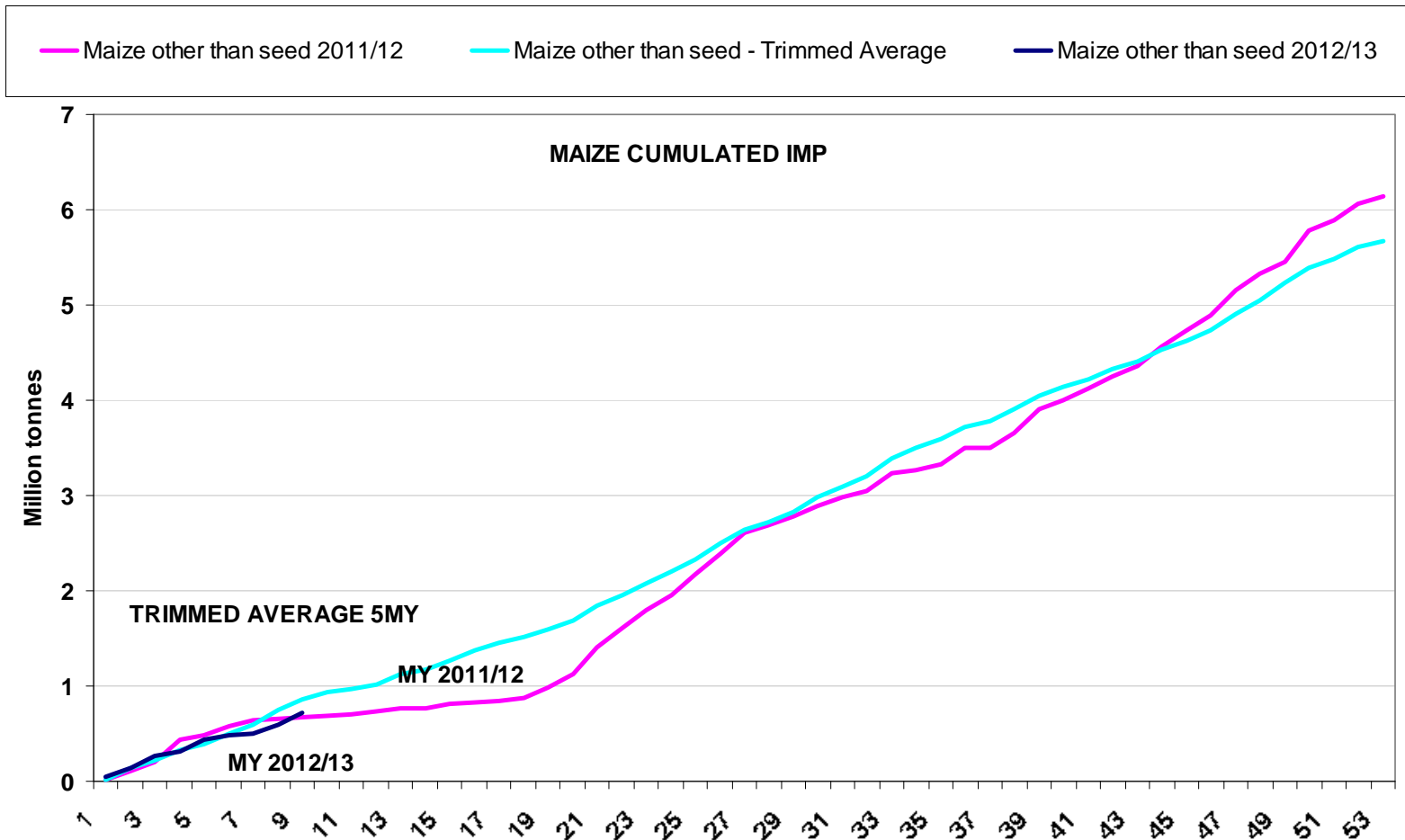


# EU maize futures





# EU Maize import commitments 2012/13



## EU Commitments 2012/2013 (9 weeks)

- **Imports:** 1.9 mio t (3.3 mio t in 2011/12; 1.1 mio t 2 years ago)
  - 919 000 t soft wheat
  - 273 000 t durum wheat
  - 715 000 t maize
  - 7 000 t barley
- **Exports:** 3.6 mio t (3.2 mio t last year; 4.7 mio t 2 years ago)
  - 1.8 mio t soft wheat
  - 151 000 t soft flour
  - 1.3 mio t barley
  - 85 000 t durum wheat
  - 167 000 t maize



**Thank you for your attention!**

**Balance sheet updates & market presentation  
available:**

**[http://ec.europa.eu/agriculture/cereals/balance-sheets/index\\_en.htm](http://ec.europa.eu/agriculture/cereals/balance-sheets/index_en.htm)**